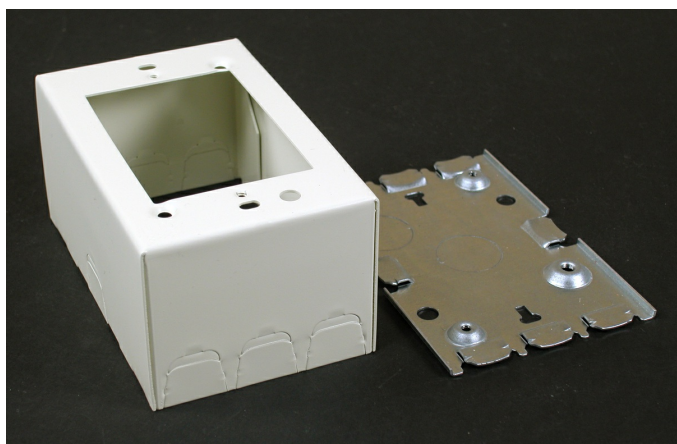




Wiremold
500/700 Single-Gang Extra Deep Switch and Receptacle Box Fitting
Part No. 5744WHC



For deep devices such as momentary contact, remote control switches, and hospital signaling system devices. Base has 1/2" trade size KO's. Larger gang boxes available by special order. Single-gang: 4 5/8" L x 2 7/8" W (117mm x 73mm). Accepts NEMA single-gang standard faceplates. NOTE: Certified to Canadian Safety Standards for sale in Canada. When ordering these products, change the "V" color prefix to "vc" or the "WH" color suffix to "WHC" to denote the Canadian versions.

Features & Benefits

For deep devices such as momentary contact, remote control switches, and hospital signaling system devices. Base has 1/2" trade size KO's. Larger gang boxes available by special order. Single-gang: 4 5/8" L x 2 7/8" W (117mm x 73mm).

Accepts NEMA single-gang standard faceplates. NOTE: Certified to Canadian Safety Standards for sale in Canada. When ordering these products, change the "V" color prefix to "vc" or the "WH" color suffix to "WHC" to denote the Canadian versions.

Specifications

General Info

| | | | |
|-------------------|---------------|------------|--------------|
| Product Line | Wiremold | UPC Number | 786776076684 |
| Country Of Origin | United States | | |

Dimensions

| | | | |
|------------------|----------|-------------------|----------|
| Product Width US | 4.625 in | Product Weight US | 0.8 lb |
| Product Depth US | 2.75 in | Product Length US | 2.875 in |

Listing Agencies / 3rd Party Agencies

| | | | |
|---------------------|--------|--------------|-----|
| cULus ListingNumber | E41751 | cULus Listed | Yes |
|---------------------|--------|--------------|-----|

Trade Programs

| | |
|-------|-----|
| USMCA | Yes |
|-------|-----|

Additional Information

| | | | |
|----------------|-----|-------------------------------|-----|
| RoHS Compliant | Yes | Product Environmental Profile | Yes |
|----------------|-----|-------------------------------|-----|