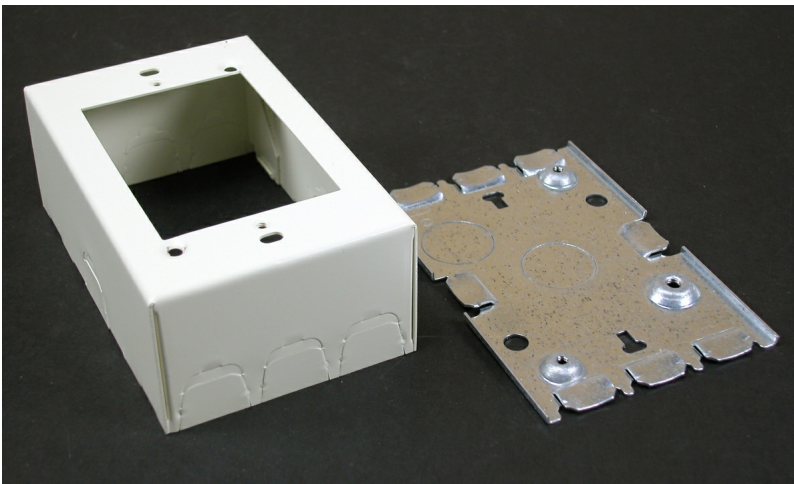




## Legrand

Wiremold 500/700 Series Single-Gang Switch and Receptacle Box Fitting, White  
Part No. 5748WH



Wiremold 500 Series raceway is ideal for surface mounting small amounts of electrical wiring or communication cables. This rugged raceway offers a low profile appearance which blend with any decor. Available in our exclusive ScuffCoat finish.

### Features & Benefits

---

This product meets the material restrictions of RoHS

### Specifications

---

#### General Info

---

Color	White
UPC Number	786776562989
Countries Of Origin	United States
Product Line	Wiremold
Application Sector	Commercial
Type	Raceway
Standard	cULus Listed Surface Metal Raceway: File E41751: Guide RJPR

---

#### Dimensions

---

Product Volume US	26.79
Product Width US	4.75
Product Height US	3.0
Product Weight US	0.53
Product Depth US	1.88

---

#### Buy American Act Compliance

---

---

NAFTA	Yes
-------	-----

---

**Additional Information**

---

RoHS Conformant	Yes
-----------------	-----

---

---

Product Environmental Profile	Yes
-------------------------------	-----

---

**Technical Information**

---

Voltage	300 V
---------	-------

---