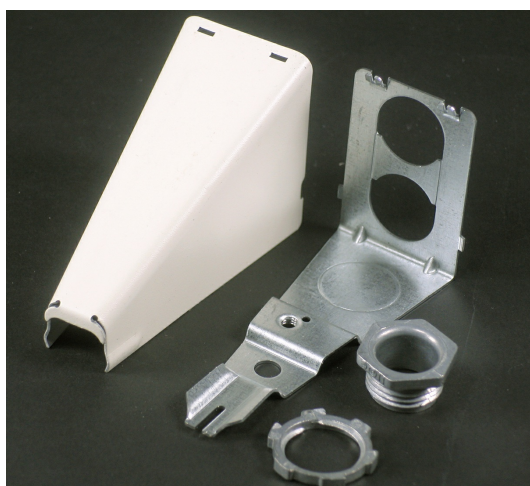




Wiremold
500/700 Adjustable Offset Connector Fitting
Part No. 5786WH



Eliminates need to offset raceway when connecting to surface type panel boxes. Adjustment from surface to center of bushings is 5/8" (15.9mm) minimum to 1 3/8" (35mm) maximum. When used as adjustable offset connector, break out metal between the two holes. When used with 700 Series Raceway, break out crescent twistout in cover. 1/2" trade size chase nipple and HICknut furnished.

Features & Benefits

Eliminates need to offset raceway when connecting to surface type panel boxes. Adjustment from surface to center of bushings is 5/8" (15.9mm) minimum to 1 3/8" (35mm) maximum.

When used as adjustable offset connector, break out metal between the two holes. When used with 700 Series Raceway, break out crescent twistout in cover. 1/2" trade size chase nipple and HICknut furnished.

Specifications

General Info

Product Line	Wiremold	Color	White
UPC Number	786776563054	Country Of Origin	United States
Application Sector	Commercial, Residential	Standard	cULus Listed Raceway: File E4376 Guide RJBT. Fittings: File E4751 Guide RJPR. Meets Article 386 of NEC. Meets Section 12-1600 of CEC.
Type	Raceway		

Dimensions

Product Width US	1.375 in	Product Weight US	0.3 lb
Product Height US	2.375 in	Product Length US	2.25 in

Listing Agencies / 3rd Party Agencies

cULus ListingNumber	E41751	cULus Listed	Yes
---------------------	--------	--------------	-----

Additional Information

RoHS Compliant	Yes	Product Environmental Profile	Yes
----------------	-----	-------------------------------	-----

Technical Information

Voltage	600.0 V
---------	---------