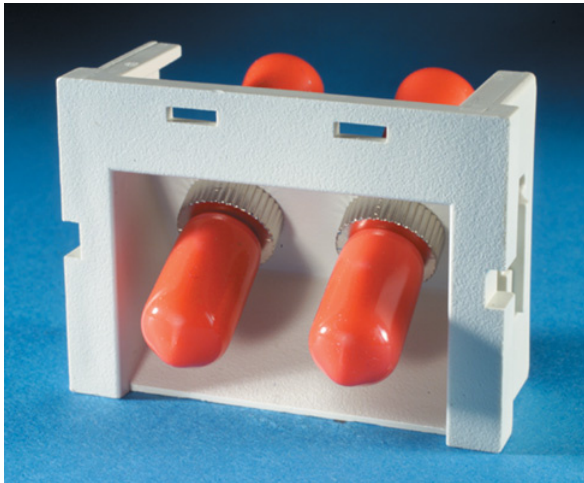




Ortronics  
Series II Module, 2-ST Multimode, 60 degree exit  
Part No. 60900182



The Series II Dual, Multimode, 2 ST Simplex Adapters (2-Fiber), Fog White, Angled Adapter Plate, has two Simplex adapters, with ceramic alignment sleeves, mounted at a 60° exit angle to allow for proper fiber bend radius. This adapter panel is 1.5 units high. These adapter panels include dust caps, and offers two insets for optional icons (Not Included), to label each connector and indicate its purpose. Compatible With: Series-II Workstation Face Plates and Series-II Workstation Surface Mount Boxes. Wiremold raceway series 2700, 2800, and 2900

## Features & Benefits

High quality insert for use in multimedia wallplates

## Specifications

### General Info

Product Line	Ortronics	UPC Number	662875245728
Country Of Origin	Mexico	Application Sector	Commercial/Industrial
Standard	UL Standard	Type	Jack

### Additional Information

RoHS Conformant	Yes
-----------------	-----