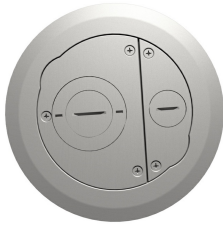




Wiremold
Evolution 6ATCFF Series Recessed Furniture Feed Assembly with Surface Style Cover
Part No. 6ATCFFSN



For carpet, tile, wood and laminate concrete floor coverings. For use in 6" (152mm) diameter opening. Devices are recessed 3 1/4" (83mm) below floor surface. Die-cast aluminum cover assembly provides one (1) 3/4" trade size screw plug opening and one (1) concentric 2"-1 1/4" trade size screw plug opening and is available in the following powder coated finishes: (BK) black, (GY) gray, (NK) nickel, (BS) brass, and (BZ) bronze. INCLUDED: For Side Compartments: No Device Plates are provided. For Center Compartment: No Device Plates are provided. For Bottom Feed Compartment: One (1) 5PHTA 1/2-Gang Pass-Through Housing Assembly, One (1) 5FFHA 1 1/2-Gang Pass-Through Housing Assembly, One (1) 575CHA 1/2-Gang 3/4" Conduit Housing Assembly (also includes junction box attached to the 3/4" conduit). NOTE: UL Fire Classified for up to 2-hour rated floors.

Features & Benefits

The Evolution Series poke-thru design includes all metal die-cast aluminium cover assemblies, with two unique spring-loaded slide egress doors

Added furniture feed capacity. ATCFF Series Poke-Thru Device offers the largest dual service furniture feed capability on the market.

All Evolution Series Poke-Thru Devices like every Wiremold/Legrand Poke-Thru Device meets and exceeds UL scrub water exclusion requirements for tile, carpet, and wood covered floors.

Suitable for use in air handling spaces, in accordance with Sec 300-22(C) of the National Electrical Code.

UL Listed and UL Fire Classified to U.S. and Canadian safety standards. UL Fire rated for up to 2-hour rated floors maintains the fire classification of the floor.

Available in surface style and flush style in standard finishes of brass, gray, black, nickel, bronze, and aluminium offering a wider range of aesthetic options

Wide trim flange is designed to meet the ADA Accessibility Guidelines as it pertains to ADA Standard 4.5 which addresses changes in floor and ground surface levels. The poke-thru trim flanges are beveled so the slope is no greater than 1:2 ratio.

Wide trim flange is designed to meet the ADA Accessibility Guidelines as it pertains to ADA Standard 4.5 which addresses changes in floor and ground surface levels. The poke-thru trim flanges are beveled so the slope is no greater than 1:2 ratio.

Quick and easy installation without the need for additional fasteners or a second installer.

This product meets the material restrictions of RoHS

Specifications

General Info

Product Line	Wiremold	Color	Satin Nickel
UPC Number	786564096740	Country Of Origin	United States
Features	Recessed	Cover Style	Furniture Feed, Surface
Application Sector	Commercial, Education, Healthcare, Hospitality	Standard	UL Fire Classified, cULus, NEC
Warranty Type	1-Year from Installation or 2-Years from Day of Sale	Type	Poke-Thru

Dimensions

Product Width US	7.75 in	Product Weight US	10.5 lb
Product Height US	16.25 in	Core Hole Size	6 in
Knockout Size	3/4 in		

Listing Agencies / 3rd Party Agencies

cULus ListingNumber	E2961	cULus Listed	Yes
---------------------	-------	--------------	-----

Trade Programs

USMCA	Yes
-------	-----

Additional Information

Product Environmental Profile	Yes
-------------------------------	-----

Technical Information

Floor Type	Carpet, Concrete, Polished Concrete, Terrazzo, Tile, Wood	Service Capacity	Dual
Fire Rating	2 hr		
