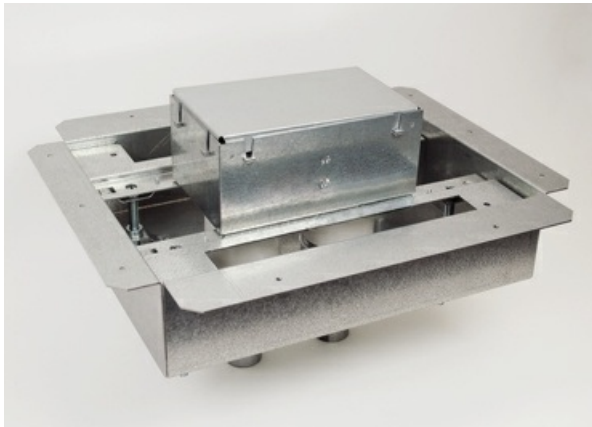




Wiremold
8802S-FC12 Omnibox Series Fire Classified 2-Gang Floor Box
Part No. 8802S-FC12



2-Gang Fire Classified Steel Floor Box. Adjustment range over deck of 2" (51mm) minimum to 6-1/2" (165mm) maximum. One 1 1/4" (32mm) and One 2" (51mm) conduit feed openings. Box Capacity - 58.5 cubic inches each gang. This floor box preserves up to a 3-hour fire rating of floors in which it has been installed.

Features & Benefits

2-Gang Fire Classified Steel Floor Box. Adjustment range over deck of 2" (51mm) minimum to 6-1/2" (165mm) maximum. One 1 1/4" (32mm) and One 2" (51mm) conduit feed openings. Box Capacity - 58.5 cubic inches each gang.

This floor box preserves up to a 3-hour fire rating of floors in which it has been installed.

Specifications

General Info

Product Line	Wiremold	UPC Number	786776184198
Country Of Origin	United States	Construction	Assembled
Cover Style	Flush	Number of Knockouts	1
Application Sector	Commercial	Standard	cULus Listed Metallic Outlet Boxes: File E2961 Guide QCIT Meets Article 314.27(C) of NEC.
Warranty Type	1-Year from Installation or 2-Years from Day of Sale	Type	Floor Box

Dimensions

Product Width US	11.375 in	Product Weight US	23.0 lb
------------------	-----------	-------------------	---------

Product Depth US	3.5 in	Product Length US	20.0 in
------------------	--------	-------------------	---------

Cubic Capacity	58.5 in ³	Knockout Size	1 in
----------------	----------------------	---------------	------

Listing Agencies / 3rd Party Agencies

cULus ListingNumber	E2961	cULus Listed	Yes
---------------------	-------	--------------	-----

Trade Programs

USMCA	Yes
-------	-----

Additional Information

RoHS Compliant	Yes
----------------	-----

Technical Information

Floor Type	Concrete	Service Capacity	Dual
------------	----------	------------------	------

Minimum Floor Depth	2 in	Fire Rating	3 hr
---------------------	------	-------------	------

Box Capacity	2 Gangs	Cable Entry	CONDUIT
--------------	---------	-------------	---------

Box Type	Fire Classified	Depth Behind Device Plates	2.75 in
----------	-----------------	----------------------------	---------
