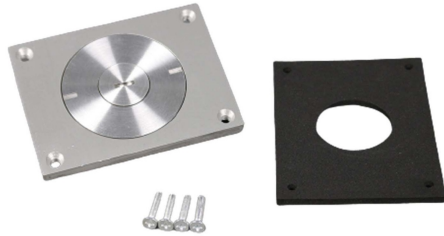




Wiremold
880CM3-1 - Omnibox Series Shallow Cast-Iron Floor Box
Part No. 880CM3-1



The 880CM3 Omnibox Floor Box Series provides an excellent activation solution for applications where single service is required in open space areas. The 880CM3 floor box is offered in a stamped steel construction, designed to be installed in above grade concrete floor applications and to meet a wide range of market requirements.

This floor box series has many applications, some of which are schools, financial institutions, and commercial office buildings.

Features & Benefits

TopGuard protection. All cover assemblies for the Omnibox Floor Box Series have TopGuard protection. An integral design which keeps out water, dirt, and debris from the power and communication compartments.

Watertight cast-iron construction. Meets requirements for on grade or below grade application.

Boxes and covers have been listed by Underwriters Laboratories Inc. to their standard UL514A, 514C, 514D, and Canadian standard C22.2

Datacom connectivity options. Accepts industry standard and proprietary devices from a wide range of manufacturers to provide a seamless and aesthetically pleasing interface for voice, data, audio, and video applications at the point-of-use.

A wide selection of data and bezel options available for use with Ortronics TracJack and Series II devices.

Fully adjustable box. Before and after concrete pour adjustability. Lower installed cost.

Two-gang configurations, maximum flexibility. Can remove divider for greater capacity. Supports multiservice applications.

Flush activation assemblies for carpet and tile. Aesthetically pleasing assemblies are interchangeable for both cast-iron and stamped steel.

This product meets the material restrictions of RoHS.

Specifications

General Info

Product Line	Wiremold	UPC Number	786564515920
Country Of Origin	United States	Construction	Assembled
Cover Style	Flush	Application Sector	Commercial, Education

Standard	cULus Listed Metallic Outlet Boxes: File E2961 Guide QCIT. Meets Article 314.27(C) of NEC.	Warranty Type	1-Year from Installation or 2-Years from Day of Sale
----------	--	---------------	--

Type	Floor Box
------	-----------

Dimensions

Product Width US	5.2 in	Product Weight US	9.876 lb
Product Depth US	12.5 in	Product Height US	2.5 in
Cubic Capacity	118 in ³	Knockout Size	1 in

Listing Agencies / 3rd Party Agencies

cULus ListingNumber	E2961	cULus Listed	Yes
---------------------	-------	--------------	-----

Additional Information

RoHS Compliant	Yes	Product Environmental Profile	Yes
----------------	-----	-------------------------------	-----

Technical Information

Floor Type	Concrete	Service Capacity	Triple
Box Capacity	3 Gangs	Cable Entry	Through Floor
Box Type	Above-Grade	Depth Behind Device Plates	1.75 in
