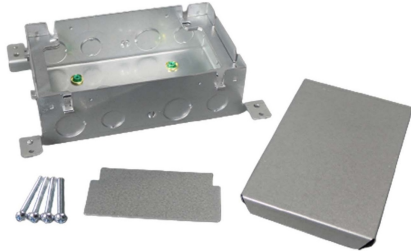




Wiremold
Omnibox® Series Double Gang Shallow Steel Floor Box
Part No. 880M2



The 880M2 shallow two gang Omnibox® Floor Box provides an excellent activation solution for applications where single service is required in open space areas. The 880M2 floor box is offered in a stamped steel construction, designed to be installed in above grade concrete floor applications and to meet a wide range of market requirements. This floor box series has many applications, some of which are schools, financial institutions, and commercial office buildings.

Features & Benefits

| | |
|---|--|
| TopGuard protection. All cover assemblies for the Omnibox Floor Box Series have TopGuard protection. An integral design which keeps out water, dirt, and debris from the power and communication compartments. | Fully adjustable box. Before and after concrete pour adjustability. Lower installed cost. |
| Concrete-tight stamped steel construction. Lower cost option for above grade applications. | Two-gang configurations, maximum flexibility. Can remove divider for greater capacity. Supports multiservice applications. |
| Boxes and covers have been listed by Underwriters Laboratories Inc. to their standard UL514A, 514C, 514D, and Canadian standard C22.2. | Flush activation assemblies for carpet and tile. Aesthetically pleasing assemblies are interchangeable for both cast-iron and stamped steel. |
| Datacom connectivity options. Accepts industry standard and proprietary devices from a wide range of manufacturers to provide a seamless and aesthetically pleasing interface for voice, data, audio, and video applications at the point-of-use. A wide selection of data and bezel options available for use with Ortronics TracJack and Series II devices. | |

Specifications

General Info

| | | | |
|--------------------|--------------|---------------------|--|
| Product Line | Wiremold | Color | Silver |
| UPC Number | 786564221739 | Country Of Origin | Mexico |
| Construction | Assembled | Number of Knockouts | 2 |
| Application Sector | Commercial | Standard | cULus Listed Metallic Outlet Boxes: File E2961 Guide QCIT. Meets Article 314.27(C) of NEC. |

| | | | |
|---------------------------------------|--------------|-------------------------------|----------|
| Type | Floor Box | | |
| Dimensions | | | |
| Product Width US | 7.0 in | Product Weight US | 3.43 lb |
| Product Volume US | 166.25 cu in | Product Depth US | 9.5 in |
| Product Height US | 2.5 in | Cubic Capacity | 80 cu in |
| Listing Agencies / 3rd Party Agencies | | | |
| cULus ListingNumber | E2961 | cULus Listed | Yes |
| Buy American Act Compliance | | | |
| NAFTA | Yes | | |
| Additional Information | | | |
| RoHS Conformant | Yes | Product Environmental Profile | Yes |
| Technical Information | | | |
| Cable Entry | Knockouts | Number of Outlets | 0 |