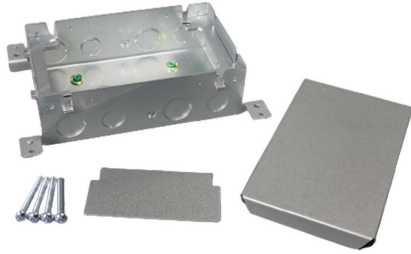




Wiremold  
**Omnibox® Series Double Gang Shallow Steel Floor Box**  
Part No. 880M2



The 880M2 shallow two gang Omnibox® Floor Box provides an excellent activation solution for applications where single service is required in open space areas. The 880M2 floor box is offered in a stamped steel construction, designed to be installed in above grade concrete floor applications and to meet a wide range of market requirements. This floor box series has many applications, some of which are schools, financial institutions, and commercial office buildings.

## Features & Benefits

TopGuard protection. All cover assemblies for the Omnibox Floor Box Series have TopGuard protection. An integral design which keeps out water, dirt, and debris from the power and communication compartments.

Concrete-tight stamped steel construction. Lower cost option for above grade applications.

Boxes and covers have been listed by Underwriters Laboratories Inc. to their standard UL514A, 514C, 514D, and Canadian standard C22.2.

Datacom connectivity options. Accepts industry standard and proprietary devices from a wide range of manufacturers to provide a seamless and aesthetically pleasing interface for voice, data, audio, and video applications at the point-of-use. A wide selection of data and bezel options available for use with Ortronics TracJack and Series II devices.

Fully adjustable box. Before and after concrete pour adjustability. Lower installed cost.

Two-gang configurations, maximum flexibility. Can remove divider for greater capacity. Supports multiservice applications.

Flush activation assemblies for carpet and tile. Aesthetically pleasing assemblies are interchangeable for both cast-iron and stamped steel.

## Specifications

### General Info

Product Line	Wiremold	Color	Silver
UPC Number	786564221739	Country Of Origin	Mexico
Construction	Assembled	Number of Knockouts	2
Application Sector	Commercial	Standard	cULus Listed Metallic Outlet Boxes: File E2961 Guide QCIT. Meets Article 314.27(C) of NEC.

---

Type	Floor Box
------	-----------

---

### Dimensions

---

Product Width US	7.0 in	Product Weight US	3.43 lb
------------------	--------	-------------------	---------

---

Product Volume US	166.25 cu in	Product Depth US	9.5 in
-------------------	--------------	------------------	--------

---

Product Height US	2.5 in	Cubic Capacity	80 cu in
-------------------	--------	----------------	----------

---

### Listing Agencies / 3rd Party Agencies

---

cULus ListingNumber	E2961	cULus Listed	Yes
---------------------	-------	--------------	-----

---

### Buy American Act Compliance

---

NAFTA	Yes
-------	-----

---

### Additional Information

---

RoHS Conformant	Yes	Product Environmental Profile	Yes
-----------------	-----	-------------------------------	-----

---

### Technical Information

---

Cable Entry	Knockouts in	Number of Outlets	0
-------------	--------------	-------------------	---

---