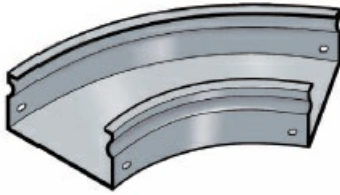




Cablofil  
Trough 45 Deg Bnd- PAINTED (2H, 8W)  
Part No. 960215



Cablofil Fiber Trough utilizes high strength steel components to provide the strength and durability required to manage fiber cabling requirements in the most demanding data center environments.

## Features & Benefits

Strong, corrosion resistant steel construction.

Rolled edge: for cable protection.

Unique design: allows covers to snap on.

18 gage steel.

## Specifications

### General Info

Product Line	Cablofil	Finish	Custom Painted
UPC Number	800388244115	Country Of Origin	Italy

### Dimensions

Product Width US	9.9 in	Product Weight US	2.4 lb
Product Volume US	0.232 cu ft	Product Depth US	10.4 in
Product Height US	3.9 in		

### Buy American Act Compliance

BAA	Yes
-----	-----