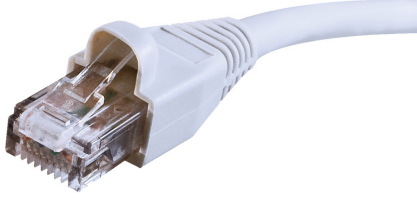




On-Q
Cat 5e Patch Cable, 25 ft, White
Part No. AC3525WHV1

This component rated Cat 5e patch cable is constructed with a low profile, snagless boot that protects the tab from catching on other cables in a high density patch panel application.



Features & Benefits

100 MHz patch cable supports 10 Gigabit Ethernet speeds

UL verified to support the Cat 5e performance patch cable specification

Snagless overmold prevents insertion tab from catching on other cables

24 AWG stranded patch cable :

Specifications

General Info

Product Line	On-Q	UPC Number	804428031796
Country Of Origin	Taiwan, Province Of China	Application Sector	Residential
Standard	UL, CSA, FCC, 94V-0 Flame Retardant, RoHS		

Dimensions

Outside Diameter < 0.25 in

Technical Information

Plug Type	RJ45 Plug	Attenuation	22 dB
Wire Size	24AWG AWG	Number of Conductors	4
Conductor Material	Copper		