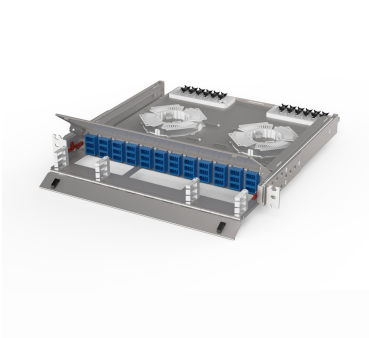




Ortronics

Infinium Access, 1 Rack Unit (RU), Rack Mount Fiber Enclosure - acclAIM to acclAIM Adapter (288 Fiber), OS2 Single-Mode
Part No. ACCESS-01U-AA



The Infinium Access UHD+ Enclosure offers maximum access and visibility to install, manage and maintain, the extreme density of 288 fibers all within 1 RU. Infinium Access utilizes a patented enclosure drawer release, spring loaded top cover, access cutouts, and cable management in the front and rear of the enclosure, all while employing the industry leading acclAIM connectivity.

Features & Benefits

Access Slide: By simply releasing the thumbscrews, the enclosure drawer slides forward up to 10 inches, clearing the plain of equipment, enabling unprecedented access to the fibers and cassettes.

Over-Under: The Infinium Access Enclosure has an opening in the bottom. This innovative design along with the open enclosure ceiling allows the tech to remove the rear acclAIM connectors from the top or the bottom of the enclosure.

Density: Maximum Fibers per Rack Unit: 288

Maximum acclAIM Connectors per Rack Unit: 36

Cable Management: Front cable managers route connectors across three tiers, easing dense patching. The back cable tray has tiedown points, splice tray space, cable spools for slack, and HiLOC anchors for routing and strain relief of trunk cables.

Spring Loaded Top Cover: With a simple press of the red buttons on each side of the enclosure the lid of the enclosure raises automatically, also releasing the front door to drop forward out of the way, enabling tremendous access to the front patching field.

Splice Options: If splicing is preferred or needed, the Infinium Access can accommodate two 144 fiber splice trays mounted in the back of the enclosure.

Maximum VSFF (MDC) Connectors per Rack Unit: 144

Infinium acclAIM Connectivity: Minimize loss, longer lifecycle, simplify design, reduce labor.

Specifications

General Info

Product Line	Ortronics	Color	Magnesium
Finish	Powder Coat	UPC Number	662875107446
Country Of Origin	Mexico	Features	Drawer Slide
Application Sector	Commercial, Industrial	Type	Enclosure

Dimensions

Product Width US	19.0 in	Product Weight US	15.55 lb
Product Depth US	20.09 in	Product Height US	1.72 in

Technical Information

Fiber Optic Cable Type	OS2	Compatibility	acclAIM
Rack Units	1	Number of Ports	36
Single/Multimode	Single-Mode	Capacity	36 Adapter Panels

Fiber Size	9/125	Mounting	Rack Mount
Port Type	acclAIM to acclAIM Blue		