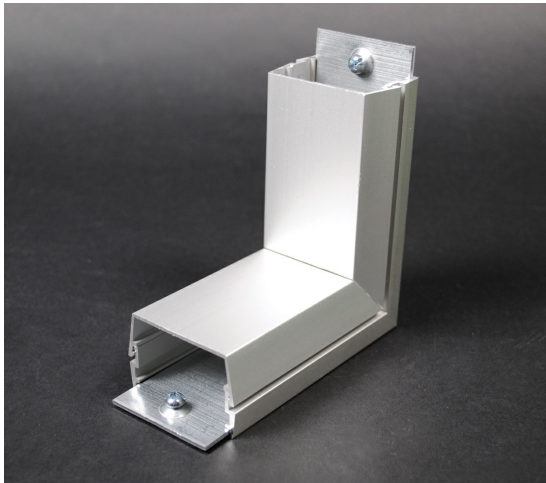




Wiremold
AL2400 Internal Elbow
Part No. AL2417



Makes 90 degree internal corners. Two AL2401 Couplings included.

Features & Benefits

Makes 90 degree internal corners. Two AL2401 Couplings included.

Specifications

General Info

Product Line	Wiremold	UPC Number	786776044485
Country Of Origin	Mexico	Application Sector	Commercial
Standard	cULus Listed Raceway: File E4376 Guide RJPR. Fittings: File E41751 Guide RJPR. Raceway & Fittings: Meet Article 386 of NEC. Multioutlet Assemblies: Meet Article 380 of NEC.	Type	Plugmold

Dimensions

Product Width US	2.0 in	Product Weight US	0.37 lb
Product Height US	4.0 in	Product Length US	4.0 in

Listing Agencies / 3rd Party Agencies

cULus ListingNumber	E41751	cULus Listed	Yes
---------------------	--------	--------------	-----

Additional Information

RoHS Compliant

Yes

Product Environmental Profile Yes

Technical Information

Amperage

15 A

Enclosure Type

Aluminum

Voltage

125.0 V

Environmental Conditions

Dry interior
locations
