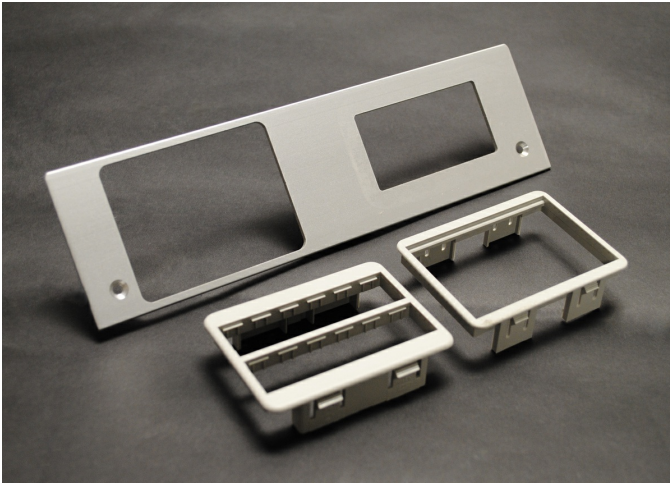




**Wiremold**  
**AL241S-HB Lab Bench Work Surface Portal Faceplate**  
Part No. AL241FP6A-DEC



Multi-Service Pedestal Table Boxes provide convenient access to high capacity power, communication and A/V services in a sleek contemporary styling with a clear, anodized aluminum finish. All models include a divider that allows units to be field-configured for one or multiple compartments, providing flexibility and accessibility on either side of a desk or lab bench. Models can also be used without the included partitions for all power or all data applications. The satin anodized aluminum finish makes the unit an attractive complement to Isoduct® Series Raceway installations in laboratory settings and can be used on laboratory furniture, where shelving is not present, to secure horizontal runs of raceway. Laboratory Pedestal Table Boxes help to comply with ADA requirements by making power and data more accessible to all users. Combination 1/2" and 3/4" conduit knockouts on the bottom provide easy accessibility.

## Features & Benefits

Faceplate with Left Opening: Ortronics or Wiremold Open System Communication 6A Module, adapters included. Right Opening: Decorator.

## Specifications

### General Info

Product Line	Wiremold	UPC Number	786776178418
--------------	----------	------------	--------------

### Listing Agencies / 3rd Party Agencies

cULus ListingNumber	E2961	cULus Listed	Yes
---------------------	-------	--------------	-----

### Additional Information

RoHS Conformant	Yes
-----------------	-----