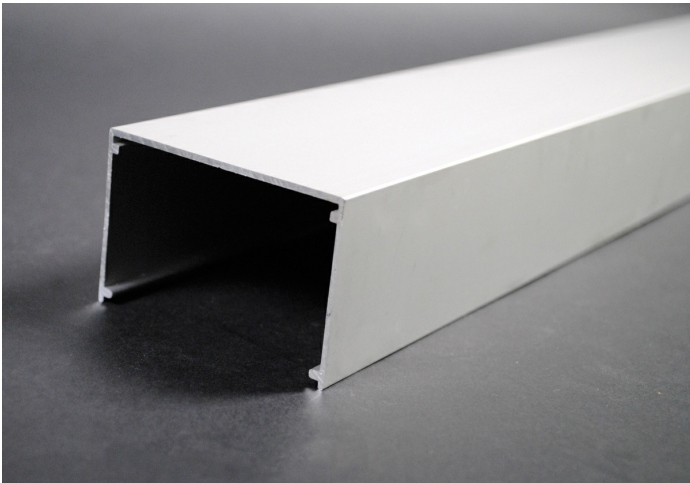




Wiremold
Wiremold AL3300 Series Raceway Base
Part No. AL3300B-10



The Wiremold 3300 series aluminum raceway system meets the demands of today's commercial spaces, providing a compact, handsome and effective method of consolidating all power and communication cabling. In laboratories, healthcare facilities and upscale office locations, the divided aluminum raceway separates power and communication cabling and directs these services where required. The low-profile design can be installed as baseboard, surface mounted, or under laboratory reagent shelves. The two-piece raceway means wiring is always accessible and changes are easily accomplished at any time.

Features & Benefits

This product meets the material restrictions of RoHS

Specifications

General Info

Product Line	Wiremold	Color	Silver
UPC Number	786776189575	Country Of Origin	Mexico
Product Series	AL3300 Series	Installation Location	On Wall
Application Sector	Commercial	Standard	cULus Listed Surface Metal Raceway: File E4376: Guide RJBT/RJBT7
Warranty Type	1-Year from Installation or 2-Years from Day of Sale	Type	Raceway Base

Dimensions

Product Width US	120.0 in	Product Weight US	0.56 lb
Product Volume US	649.73 cu in	Product Depth US	1.88 in
Product Height US	2.88 in		

Listing Agencies / 3rd Party Agencies

cULus ListingNumber	E4376	cULus Listed	Yes
---------------------	-------	--------------	-----

Trade Programs

USMCA	Yes
-------	-----

Additional Information

RoHS Compliant	Yes	Product Environmental Profile	Yes
----------------	-----	-------------------------------	-----

Technical Information

Is Pre-Wired	No	Indoor/Outdoor	Indoor
--------------	----	----------------	--------

Number of Channels	1	Voltage	600.0 V
--------------------	---	---------	---------