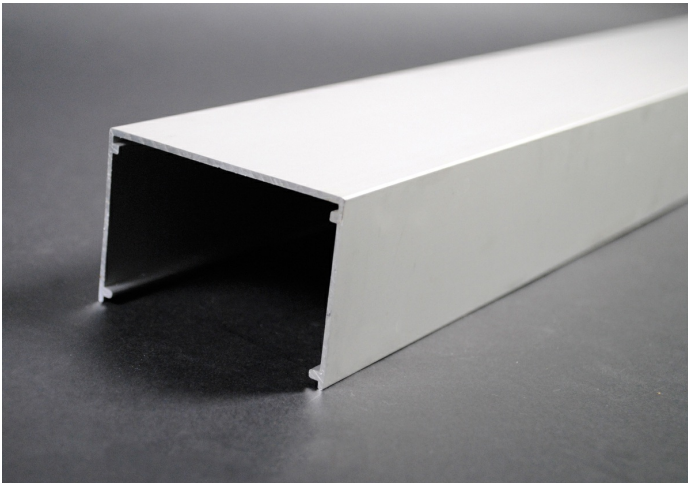




Wiremold
Discontinued - AL3300 Raceway Base
Part No. AL3300B10US



6063-T5 extruded aluminum, satin anodized finish. Nominal wall thickness .060" (1.5mm). Packed four 10'(3m) lengths per carton. Made in U.S.A.

Features & Benefits

This product meets the material restrictions of RoHS

Specifications

General Info

Product Line	Wiremold	Replaced by Part Number	AL3300B10
UPC Number	786776189902	Country Of Origin	United States

Application Sector	Commercial	Standard	cULus Listed Raceway: File E4376 Guide RJPR. Fittings: File E41751 Guide RJPR. Raceway & Fittings: Meet Article 386 of NEC. Multioutlet Assemblies: Meet Article 380 of NEC.
--------------------	------------	----------	---

Type	Raceway
------	---------

Listing Agencies / 3rd Party Agencies

cULus ListingNumber	E4376	cULus Listed	Yes
---------------------	-------	--------------	-----

Trade Programs

USMCA	Yes
-------	-----

Additional Information

RoHS Compliant

Yes

Product Environmental Profile Yes

Technical Information

Voltage

600.0 V
