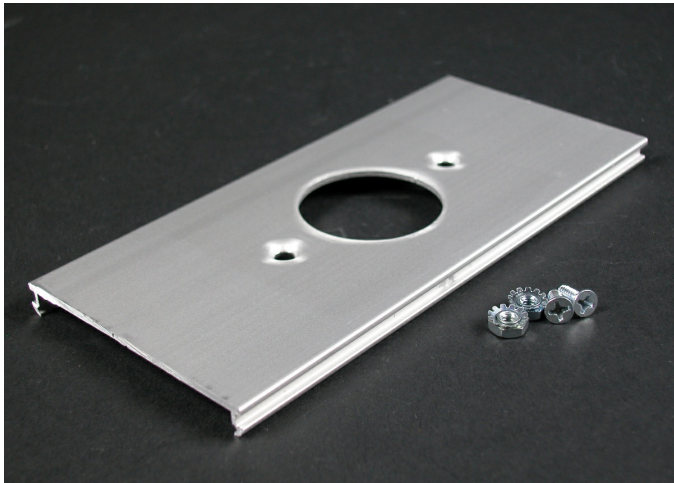




Wiremold
AL3300 Single Receptacle Cover Plate
Part No. AL3346E



Installs straight blade and locking single receptacles with face diameters of 1.38" - 1.39" (35mm-36mm).

Features & Benefits

Installs straight blade and locking single receptacles with face diameters of 1.38" - 1.39" (35mm-36mm).

Specifications

General Info

| | | | |
|-------------------|---|--------------------|--------------|
| Product Line | Wiremold | UPC Number | 786776510393 |
| Country Of Origin | Mexico | Application Sector | Commercial |
| Standard | cULus Listed Raceway: File E4376 Guide RJPR. Fittings: File E41751 Guide RJPR. Raceway & Fittings: Meet Article 386 of NEC. Multioutlet Assemblies: Meet Article 380 of NEC. | Type | Raceway |

Dimensions

| | | | |
|------------------|---------|-------------------|--------|
| Product Width US | 2.75 in | Product Length US | 6.0 in |
|------------------|---------|-------------------|--------|

Listing Agencies / 3rd Party Agencies

| | | | |
|---------------------|--------|--------------|-----|
| cULus ListingNumber | E41751 | cULus Listed | Yes |
|---------------------|--------|--------------|-----|

Buy American Act Compliance

| | |
|-------|-----|
| NAFTA | Yes |
|-------|-----|

Additional Information

| | | | |
|-----------------|-----|-------------------------------|-----|
| RoHS Conformant | Yes | Product Environmental Profile | Yes |
|-----------------|-----|-------------------------------|-----|

Technical Information

| | |
|---------|---------|
| Voltage | 600.0 V |
|---------|---------|
