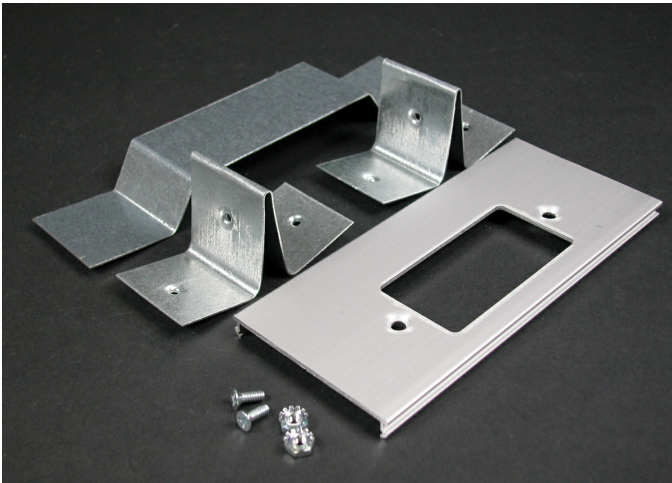




Wiremold
AL3300 Offset GFCI Receptacle Cover Plate
Part No. AL3346GO



Installs rectangular devices including surge receptacles, GFCI, and other rectangular faced single-gang wiring devices in divided aluminum raceway. 6" (152mm) offset divider included. Can also be used with 106 communication frames.

Features & Benefits

Installs rectangular devices including surge receptacles, GFCI, and other rectangular faced single-gang wiring devices in divided aluminum raceway. 6" (152mm) offset divider included. Can also be used with 106 communication frames.

Specifications

General Info

Product Line	Wiremold	UPC Number	786776524611
--------------	----------	------------	--------------

Country Of Origin	Mexico	Application Sector	Commercial
-------------------	--------	--------------------	------------

Standard	cULus Listed Raceway: File E4376 Guide RJPR. Fittings: File E41751 Guide RJPR. Raceway & Fittings: Meet Article 386 of NEC. Multioutlet Assemblies: Meet Article 380 of NEC.	Type	Raceway
----------	--	------	---------

Dimensions

Product Width US	2.75 in	Product Weight US	0.118 lb
------------------	---------	-------------------	----------

Product Length US	6.0 in
-------------------	--------

Listing Agencies / 3rd Party Agencies

cULus ListingNumber	E41751	cULus Listed	Yes
---------------------	--------	--------------	-----

Trade Programs

USMCA	Yes
-------	-----

Additional Information

RoHS Compliant	Yes	Product Environmental Profile	Yes
----------------	-----	-------------------------------	-----

Technical Information

Voltage	600.0 V
---------	---------
