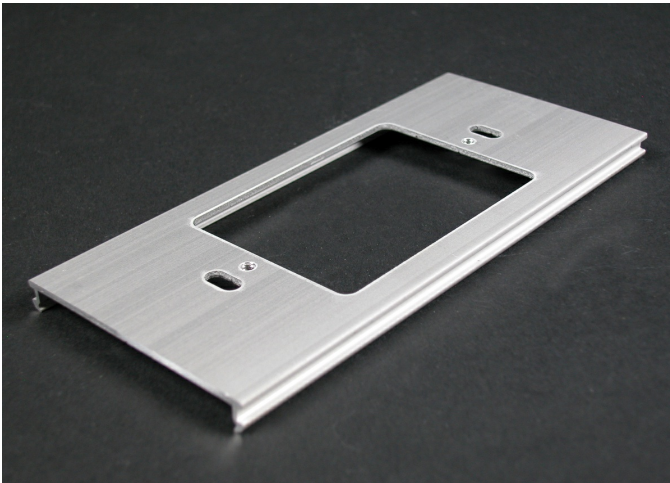




Wiremold
AL3300 Cover Plate
Part No. AL3356R



AL3300 Series Aluminum Raceway System meets the demands of today's commercial spaces, providing a compact, handsome and effective method of consolidating all power and communication cabling. In laboratories, healthcare facilities and upscale office locations, the divided aluminum raceway separates power and communication cabling and directs these services where required. The low-profile design can be installed as baseboard, surface mounted, or under laboratory reagent shelves. The two-piece raceway design means wiring is always accessible and changes are easily accomplished at any time.

Features & Benefits

Installs communication connectivity devices utilizing the industry standard single-gang faceplates. Hole cut is 2" x 2 7/8" (51mm x 73mm). Faceplates must be ordered separately.

Specifications

General Info

Product Line	Wiremold	UPC Number	786776524925
--------------	----------	------------	--------------

Country Of Origin	Mexico	Application Sector	Commercial
-------------------	--------	--------------------	------------

Standard	cULus Listed Raceway: File E4376 Guide RJPR. Fittings: File E41751 Guide RJPR. Raceway & Fittings: Meet Article 386 of NEC. Multioutlet Assemblies: Meet Article 380 of NEC.	Type	Raceway
----------	--	------	---------

Listing Agencies / 3rd Party Agencies

cULus ListingNumber	E41751	cULus Listed	Yes
---------------------	--------	--------------	-----

Buy American Act Compliance

NAFTA	Yes
-------	-----

Additional Information

RoHS Conformant	Yes	Product Environmental Profile	Yes
-----------------	-----	-------------------------------	-----

Technical Information

Voltage 600 V
