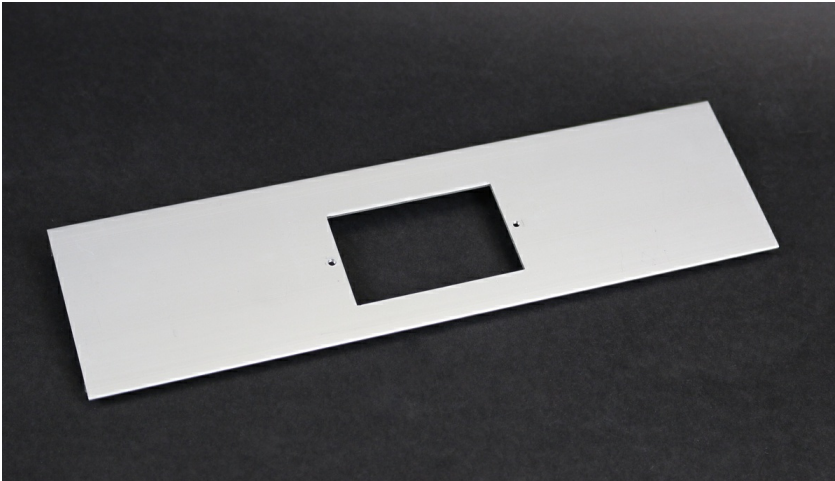




Wiremold

ALA3800 Cover Plate with 1 3/4 x 2 15/16 Opening

Part No. ALA-SG



Installs communication connectivity devices utilizing industry standard single-gang faceplates. Hole cut is 1 3/4" x 2 15/16" [44mm x 75mm]. Faceplates must be ordered separately.

Features & Benefits

This product meets the material restrictions of RoHS

Specifications

General Info

UPC Number	786776524659	Country Of Origin	Mexico
Product Line	Wiremold	Application Sector	Commercial
Type	Raceway	Standard	cULus Listed Raceway: File E4376 Guide RJBT. Fittings: File E41751 Guide RJPR. Raceway & Fittings: Meets Article 386 of NEC. Multioutlet Assemblies: Meets Article 380 of NEC.

Listing Agencies / 3rd Party Agencies

cULus Listed	Yes	cULus ListingNumber	E41751
--------------	-----	---------------------	--------

Buy American Act Compliance

NAFTA	Yes
-------	-----

Additional Information

RoHS Conformant	Yes	Product Environmental Profile	Yes
-----------------	-----	-------------------------------	-----

Technical Information

Voltage	600 V
---------	-------