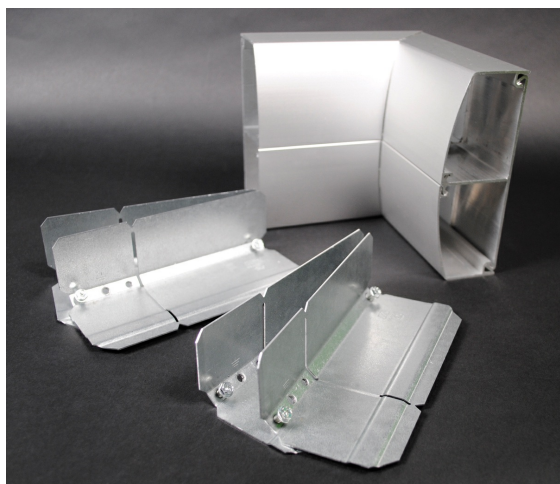




Wiremold
ALDS4000 Internal Elbow Fitting
Part No. ALDS4017



Internal corner for new lay-in or pull-through installations. Includes one pair of DS4001 Couplings.

Features & Benefits

Internal corner for new lay-in or pull-through installations. Includes one pair of DS4001 Couplings.

Specifications

General Info

Product Line	Wiremold	UPC Number	786776083170
Country Of Origin	Mexico	Application Sector	Commercial
Standard	cULus Listed Raceway: File E4376 Guide RJBT. Fittings: File E41751 Guide RJPR. Meets Article 386 of NEC. Meets Section 12-1600 of CEC.	Type	Raceway

Dimensions

Product Width US	6.0 in	Product Weight US	2.74 lb
Product Height US	5.75 in	Product Length US	6.0 in

Listing Agencies / 3rd Party Agencies

cULus ListingNumber	E41751	cULus Listed	Yes
---------------------	--------	--------------	-----

Trade Programs

USMCA	Yes
-------	-----

Additional Information

RoHS Compliant	Yes
----------------	-----

Technical Information

Voltage	600.0 V
---------	---------
