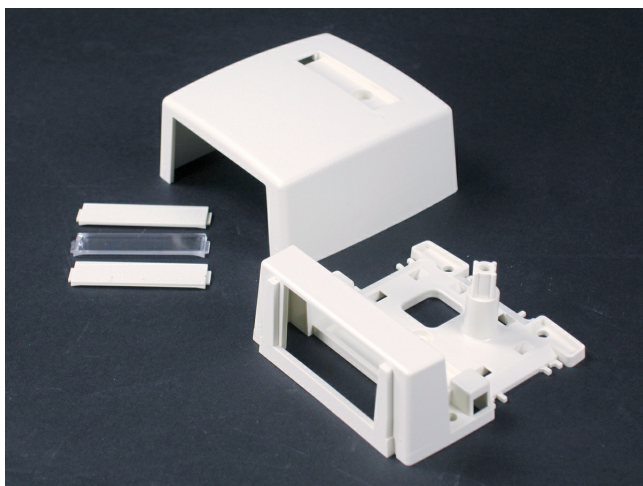




Wiremold
Uniduct 2700-2800 Series One-Insert Multimedia Box Fitting
Part No. CM-MMB-291-WH



Accepts one 2A size Wiremold Open System Communication Module or Pass and Seymour Activate Series Insert. Compatible with Uniduct 2700, 2800, and 2900 Series Raceways.

Features & Benefits

Fiber storage loop. Accepts two CM2 size Wiremold Open System communication modules or Pass and Seymour Activate Series inserts. Compatible with Wiremold 400, 800, and 2300 Series Raceways.

Specifications

General Info

Product Line	Wiremold	UPC Number	786776018929
Country Of Origin	United States		

Dimensions

Product Weight US	0.2 lb
-------------------	--------

Additional Information

RoHS Compliant	Yes	Product Environmental Profile	Yes
----------------	-----	-------------------------------	-----