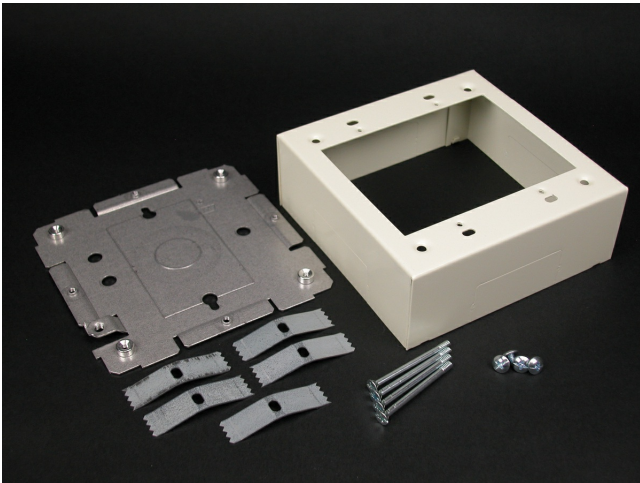




Wiremold
STL SWITCH & RECPT BOX 2G 2400 IV
Part No. CV2448-2



2400® Series Raceway is a single compartment raceway designed for communication or power applications and ideal for use in classrooms, offices, and hotel applications, or anywhere a small low profile raceway is needed. 2400D® Series Divided Raceway is a low profile steel raceway for use where a limited number of power and low voltage cables are required in the same raceway.

Features & Benefits

- Two-gang device box. Cover has twistouts on all four sides for 2400 Series Raceway.
- Base has knockout to enable extension from existing single-gang, flush wall box and 1/2" trade size KOs. Accepts industry standard faceplates for electrical and communication devices.
- NOTE: Accepts NEMA double-gang standard faceplates. Certified to Canadian Safety Standards for sale in Canada.
- When ordering this product for Canada, add "C" to the beginning of the part number to denote Canadian versions, i.e. "CV2444" or "C2444-FW".

Specifications

General Info

Product Line	Wiremold	UPC Number	786776548457
Country Of Origin	United States		

Dimensions

Product Weight US	0.05 lb
-------------------	---------

Listing Agencies / 3rd Party Agencies

cULus ListingNumber	E41751	cULus Listed	Yes
---------------------	--------	--------------	-----

Additional Information

RoHS Compliant	Yes
----------------	-----