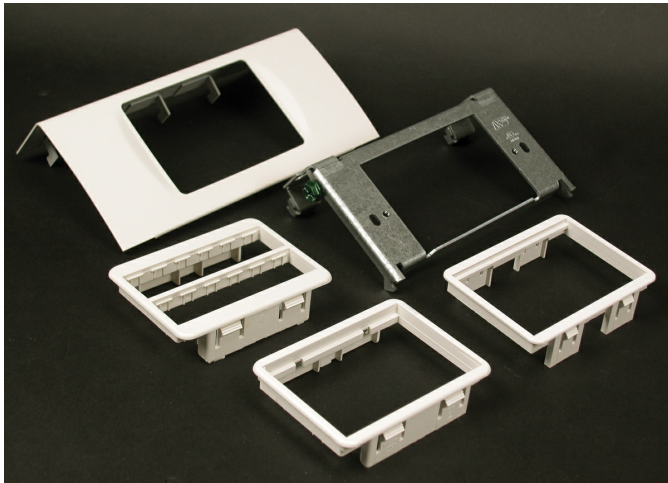




Wiremold  
Discontinued - DS4000 Single Channel MAB Device Plate Fitting  
Part No. DS4047MAB-DV



Installs communication devices into DS4000 Series Raceway. Includes CM-MAB Adapter for Wiremold Open System connectivity modules and Pass and Seymour Activate inserts. Also includes MAB2S2 Adapter for Ortronics Series II inserts and MAB6TJ Adapter for Ortronics TracJack connectors.

## Features & Benefits

Installs communication devices into DS4000 Series Raceway. Includes CM-MAB Adapter for Wiremold Open System connectivity modules and Pass and Seymour Activate inserts. Also includes MAB2S2 Adapter for Ortronics Series II inserts and MAB6TJ Adapter for Ortronics TracJack connectors.

## Specifications

### General Info

Product Line	Wiremold	UPC Number	786776081343
Country Of Origin	United States	Application Sector	Commercial
Standard	cULus Listed Raceway: File E4376 Guide RJBT. Fittings: File E41751 Guide RJPR. Base & Blank Cover: Meets Article 386 of NEC. Meets Section 12-600 of CEC.	Type	Raceway

### Dimensions

Product Length US	6.0 in
-------------------	--------

### Listing Agencies / 3rd Party Agencies

cULus ListingNumber	E41751	cULus Listed	Yes
---------------------	--------	--------------	-----

### Buy American Act Compliance

NAFTA	Yes
-------	-----

---

Additional Information

---

RoHS Conformant	Yes
-----------------	-----

---

Technical Information

---

Voltage	600.0 V
---------	---------

---