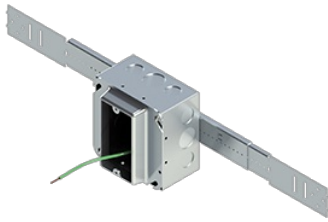




EZE FAB factory configured branch circuit wiring assemblies dramatically reduce labor and increase productivity on the jobsite



Features & Benefits

Fully assembled, ready for rough in installation

Specifications

General Info

| | | | |
|--------------|--------------|-------------------|--------|
| Product Line | Cablofil | Finish | Other |
| UPC Number | 800388470040 | Country Of Origin | Mexico |

Dimensions

| | | | |
|-------------------|-------------|-------------------|-----------|
| Product Width US | 8.75 in | Product Weight US | 16.388 lb |
| Product Volume US | 0.228 cu ft | Product Depth US | 11.25 in |
| Product Height US | 4.0 in | | |

Trade Programs

| | |
|-----|-----|
| BAA | Yes |
|-----|-----|