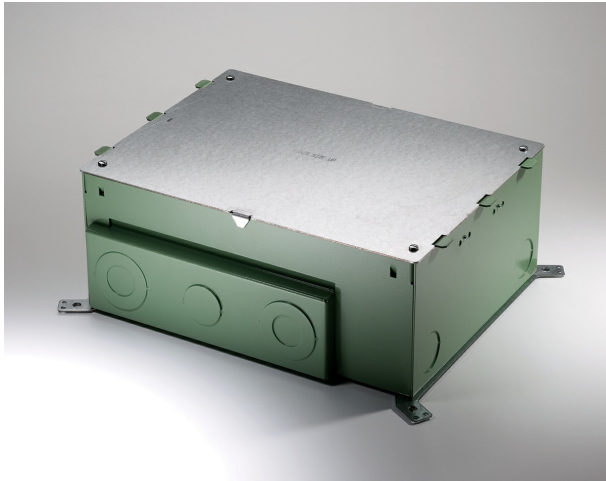




Wiremold
EFB10S-OG Evolution Series Ten-Gang Floor Box
Part No. EFB10S-OG



Designed to be installed in both on-grade and above grade concrete floor applications. Box has an epoxy coating that allows the box to be placed in on-grade applications without the need for additional vapor barriers. Box comes complete with all components needed for initial installation. Included components are: protective/disposable cover, tunnel system for connecting the two modules of compartments, two (2) removable modules, two (2) cable management guides, two (2) leveling support legs for concrete applications and trade size knockouts ranging in size from 3/4" to 1 1/4". Items not included with the box and sold separately are: receptacles, communication jacks, and A/V devices and device plates. Custom options are available upon request. NOTE: For use on bare (polished) concrete or terrazzo floors EFB610-CTR must be used. (Sold separately.)

Features & Benefits

Designed to be installed in both on-grade and above grade concrete floor applications. Box has an epoxy coating that allows the box to be placed in on-grade applications without the need for additional vapor barriers.

Items not included with the box and sold separately are: receptacles, communication jacks, and A/V devices and device plates.

Include protective/disposable cover, tunnel system for connecting the 2 modules of compartments, 2 removable modules, 2 cable management guides, 2 leveling support legs for concrete applications & trade size knockouts ranging in size from 3/4" to 1 1/4"

Box comes complete with all components needed for initial installation.

Custom options are available upon request. NOTE: For use on bare (polished) concrete or terrazzo floors EFB610-CTR must be used. (Sold separately.)

Specifications

General Info

Product Line	Wiremold	UPC Number	786776176483
Country Of Origin	United States	Construction	Assembled
Number of Knockouts	22	Application Sector	Commercial
Standard	cULus Listed Metallic Outlet Boxes: File E2961 Guide QCIT Meets Article 314.27(C) of NEC.	Warranty Type	1-Year from Installation or 2-Years from Day of Sale
Type	Floor Box		

Dimensions

Product Width US	11.187 in	Product Weight US	20.819 lb
------------------	-----------	-------------------	-----------

Product Height US	6.0 in	Product Length US	15.125 in
-------------------	--------	-------------------	-----------

Cubic Capacity	259 in ³	Knockout Size	2 in, 3/4 in
----------------	---------------------	---------------	--------------

Listing Agencies / 3rd Party Agencies

cULus ListingNumber	E2961	cULus Listed	Yes
---------------------	-------	--------------	-----

Additional Information

RoHS Compliant	Yes
----------------	-----

Technical Information

Floor Type	Concrete, Raised, Wood	Service Capacity	Triple
------------	------------------------	------------------	--------

Minimum Floor Depth	2 in	Box Capacity	10 Gangs
---------------------	------	--------------	----------

Cable Entry	knockout	Box Type	On-Grade
-------------	----------	----------	----------

Depth Behind Device Plates	3.5 in
----------------------------	--------
