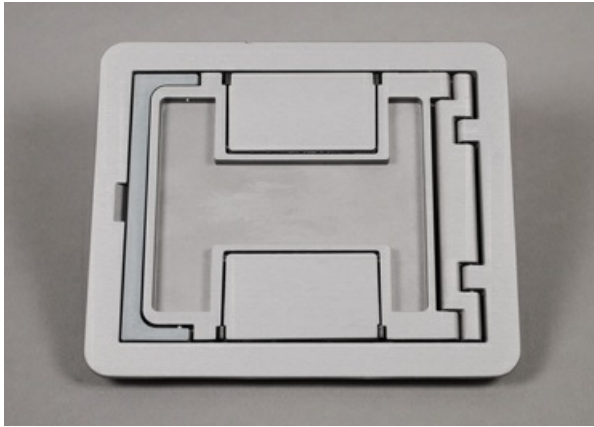




Wiremold
FPCTC - FloorPort Series Cutout Cover Assembly
Part No. FPCTCAL



FloorPort Service Fittings for Resource RFB® Series Floor Boxes, Walkercell® Cellular Raceway, and Walkerdeck Systems provide flexibility in recessed and furniture feed applications. The enhanced design also increases the ease of use and color options while continuing to exceed UL scrub water requirements. These covers are ideal for use in a wide variety of applications including educational facilities, airports, and commercial and institutional office buildings. The covers are UL Listed to U.S. and Canadian safety standards and are fire classified for use on Walkerdeck Systems and Cellular Decking Systems in accordance with Floor-Ceiling Design Numbers D739, D832, and D858. Consult the factory for specific fire classified designs.

Features & Benefits

Flanged cover for use in tile or carpet installation.

Die-cast aluminum assembly

Insert in lid allows for carpet or tile cutouts to match finished floor

NOTE: Add suffix "TR" to the end of the part number to indicate tamper-resistant cover assembly

Tamper-resistant versions are secured with a single tamper-resistant screw

Specifications

General Info

| | | | |
|----------------|---|--------------------|--|
| Product Line | Wiremold | Finish | Brushed |
| UPC Number | 786776152050 | Country Of Origin | India |
| Cover Material | Die-Cast Aluminum | Application Sector | Commercial |
| Standard | cULus Listed Metallic Outlet Box. File E2961 Guide QCIT/QCIT7 | Warranty Type | 1-Year from Installation or 2-Years from Day of Sale |
| Type | Cover | | |

Dimensions

| | | | |
|-------------------|---------|-------------------|---------|
| Product Width US | 6.58 in | Product Weight US | 1.7 lb |
| Product Height US | 0.8 in | Product Length US | 7.74 in |

Listing Agencies / 3rd Party Agencies

| | | | |
|---------------------|-------|--------------|-----|
| cULus ListingNumber | E2961 | cULus Listed | Yes |
|---------------------|-------|--------------|-----|

Additional Information

| | | | |
|----------------|-----|-------------------------------|-----|
| RoHS Compliant | Yes | Product Environmental Profile | Yes |
|----------------|-----|-------------------------------|-----|

Technical Information

| | | | |
|------------|--------------|-------------|---------------|
| Floor Type | Carpet, Tile | Cable Entry | Through Floor |
|------------|--------------|-------------|---------------|
