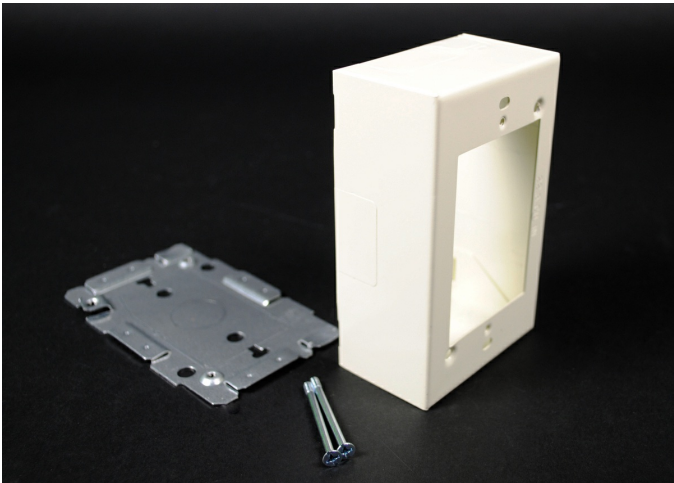




Wiremold
2000 Single-Gang Device Box Fitting
Part No. G2048



Single Gang Device Box. Cover has twistouts for 2000, 500 and 700 Series Raceways. Base has 1/2" trade size KO and rectangular KO for extension to wall box. Base has #10 threaded hole for ground connection.

Features & Benefits

Single Gang Device Box. Cover has twistouts for 2000, 500 and 700 Series Raceways. Base has 1/2" trade size KO and rectangular KO for extension to wall box. Base has #10 threaded hole for ground connection.

Specifications

General Info

Product Line	Wiremold	Replaced by Part Number	CG2048
UPC Number	786776037456	Country Of Origin	United States

Application Sector	Commercial	Standard	cULus Listed Base & Blank Cover: File E4376 Guide RJBT. Multioutlet Assemblies: File E15191 Guide PVGT. Fittings: File E41751 Guide RJPR. Base & Blank Cover & Plugmold Series w/Snapicoil Haarness: Meets Article 386 of NEC. Meets Section 12-3032 of CEC. cULus Listed Raceway: File E4376 Guide RJBT. Fittings: File E41751 Guide RJPR. Base & Black Cover: Meets Article 386 of NEC. Meets Section 12-600 of CEC.

Type	Plugmold
------	----------

Dimensions

Product Width US	2.875 in	Product Depth US	1.75 in
Product Length US	2.875 in		

Buy American Act Compliance

NAFTA	Yes
-------	-----

Additional Information

RoHS Conformant	Yes	Product Environmental Profile	Yes
-----------------	-----	-------------------------------	-----

Technical Information

Amperage	15 A	Enclosure Type	Steel
Voltage	125.0 V	Environmental Conditions	Dry interior locations