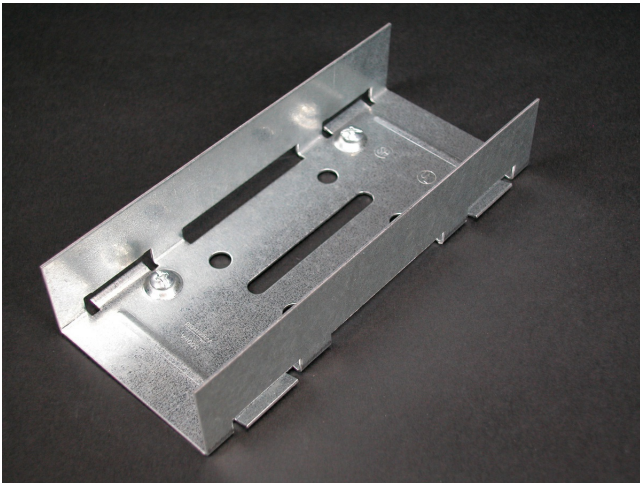




Wiremold
3000 Rigid Inside Coupling (Galvanized) Fitting
Part No. G3001A



Joins lengths of 3000 Series Raceway in installations where added rigidity is required, such as when raceway is suspended overhead.

Features & Benefits

Joins lengths of 3000 Series Raceway in installations where added rigidity is required, such as when raceway is suspended overhead.

Specifications

General Info

Product Line	Wiremold	UPC Number	786776085280
Country Of Origin	United States	Application Sector	Commercial
Standard	cULus Listed Raceway:File E4376 Guide RJBT. Fittings: File E41751 Guide RJPR. Base & Blank Cover: Meets Article 386 of NEC. Meets Section 12-600 of CEC.	Type	Raceway

Dimensions

Product Length US	6.0 in
-------------------	--------

Listing Agencies / 3rd Party Agencies

cULus ListingNumber	E41751	cULus Listed	Yes
---------------------	--------	--------------	-----

Buy American Act Compliance

NAFTA	Yes
-------	-----

Additional Information

RoHS Conformant	Yes	Product Environmental Profile	Yes
-----------------	-----	-------------------------------	-----

Technical Information

Voltage	600.0 V
---------	---------
