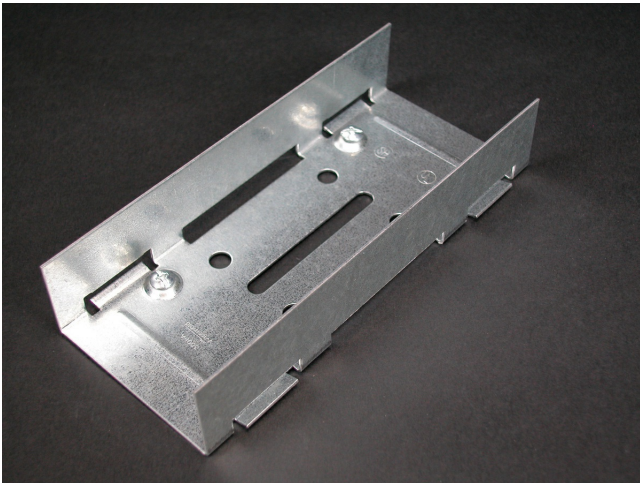




Wiremold
3000 Rigid Inside Coupling (Galvanized) Fitting
Part No. G3001A



Joins lengths of 3000 Series Raceway in installations where added rigidity is required, such as when raceway is suspended overhead.

Features & Benefits

Joins lengths of 3000 Series Raceway in installations where added rigidity is required, such as when raceway is suspended overhead.

Specifications

General Info

Product Line	Wiremold	Color	Gray
UPC Number	786776085280	Country Of Origin	United States

Application Sector	Commercial	Standard	cULus Listed Raceway: File E4376 Guide RJBT. Fittings: File E41751 Guide RJPR. Base & Blank Cover: Meets Article 386 of NEC. Meets Section 12-600 of CEC.
--------------------	------------	----------	---

Type	Raceway
------	---------

Dimensions

Product Weight US	0.32 lb	Product Length US	6.0 in
-------------------	---------	-------------------	--------

Listing Agencies / 3rd Party Agencies

cULus ListingNumber	E41751	cULus Listed	Yes
---------------------	--------	--------------	-----

Trade Programs

USMCA	Yes
-------	-----

Additional Information

RoHS Compliant	Yes	Product Environmental Profile	Yes
----------------	-----	-------------------------------	-----

Technical Information

Voltage	600.0 V
---------	---------
