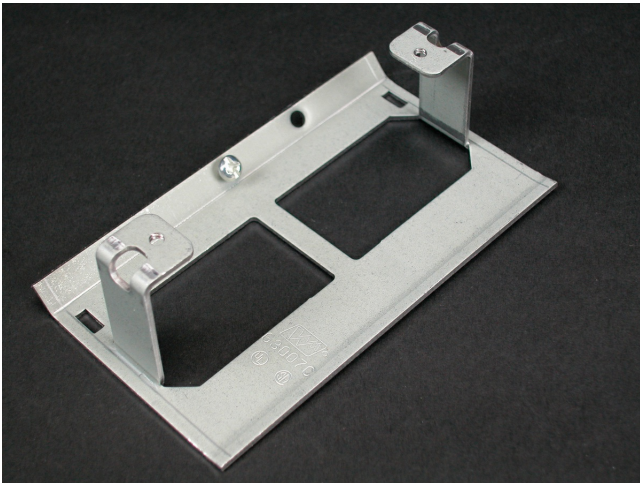




Wiremold  
3000 Device Bracket Fitting  
Part No. G3007C



Mounts standard after-market devices into 3000 Series Raceway. Accepts single-gang devices with 3.281" (95mm) mounting centers. Use with commercially available flush plates (not furnished).

## Features & Benefits

Mounts standard after-market devices into 3000 Series Raceway. Accepts single-gang devices with 3.281" (95mm) mounting centers. Use with commercially available flush plates (not furnished).

## Specifications

### General Info

Product Line	Wiremold	UPC Number	786776085358
Country Of Origin	United States	Application Sector	Commercial
Standard	cULus Listed Raceway:File E4376 Guide RJBT. Fittings: File E41751 Guide RJPR. Base & Blank Cover: Meets Article 386 of NEC. Meets Section 12-600 of CEC.	Type	Raceway

### Dimensions

Product Length US 4.5 in

### Buy American Act Compliance

NAFTA Yes

### Additional Information

RoHS Conformant Yes Product Environmental Profile Yes

---

## Technical Information

---

Voltage 600.0 V

---