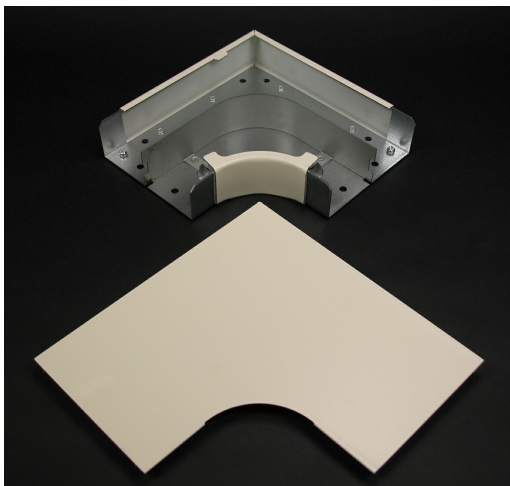




Wiremold  
4000 RADIUS Full Capacity Flat Elbow Fitting  
Part No. G4011FO



Full capacity 90 degree flat corner used in divided or undivided applications. Provides 2" (51mm) bend radius control for UTP, STP and fiber optic installations. Ideal for new installation when the cable is lay-in or pull-through.

## Features & Benefits

Full capacity 90 degree flat corner used in divided or undivided applications. Provides 2" (51mm) bend radius control for UTP, STP and fiber optic installations. Ideal for new installation when the cable is lay-in or pull-through.

## Specifications

### General Info

Product Line	Wiremold	Color	Gray
UPC Number	786776536973	Country Of Origin	United States
Application Sector	Commercial, Residential	Standard	cULus Listed Raceway: File E4376 Guide RJBT. Fittings: File E41751 Guide RJPR. Base & Blank Cover: Meets Article 386 of NEC. Meets Section 12-600 of CEC.
Type	Raceway		

### Dimensions

Product Weight US	2.66 lb	Product Height US	1.75 in
Product Length US	8.75 in		

### Listing Agencies / 3rd Party Agencies

cULus ListingNumber	E41751	cULus Listed	Yes
---------------------	--------	--------------	-----

---

---

## Trade Programs

---

USMCA Yes

---

## Additional Information

---

RoHS Compliant Yes Product Environmental Profile Yes

---

## Technical Information

---

Voltage 600.0 V

---