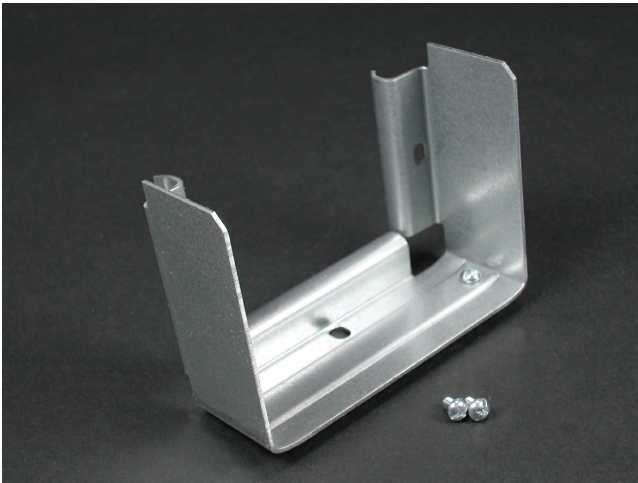




Wiremold  
6000 Converter Coupling Fitting  
Part No. G6001TX



6000® Series Raceway can be used divided for separate wiring circuits or multi-service applications. For large cabling installations, 6000 can be used undivided as headers and feeders or to bring wiring to a specified location. 6000 Series Raceway is ideal for all applications requiring a high cable capacity, dual service steel raceway. Commercial, institutional, and industrial applications all benefit from the 6000 Series rigid steel construction and durable Ivory ScuffCoat™ finish. 6000 Series Raceway is also ideal for municipalities that require either all steel construction or prohibit nonmetallic cable management systems.

## Features & Benefits

Use this coupling to convert G6011TX or G6017TX into tee or cross. For tee, one required, for cross, two required.

## Specifications

### General Info

Product Line	Wiremold	UPC Number	786776088069
Country Of Origin	United States	Application Sector	Commercial
Standard	cULus Listed Raceway: File E4376 Guide RJBT. Fittings: File E41751 Guide RJPR. Base & Blank Cover: Meets Article 386 of NEC. Meets Section 12-600 of CEC.	Type	Raceway

### Listing Agencies / 3rd Party Agencies

cULus ListingNumber	E41751	cULus Listed	Yes
---------------------	--------	--------------	-----

### Buy American Act Compliance

NAFTA	Yes
-------	-----

### Additional Information

RoHS Conformant	Yes	Product Environmental Profile	Yes
-----------------	-----	-------------------------------	-----

### Technical Information

---

Voltage

600 V

---