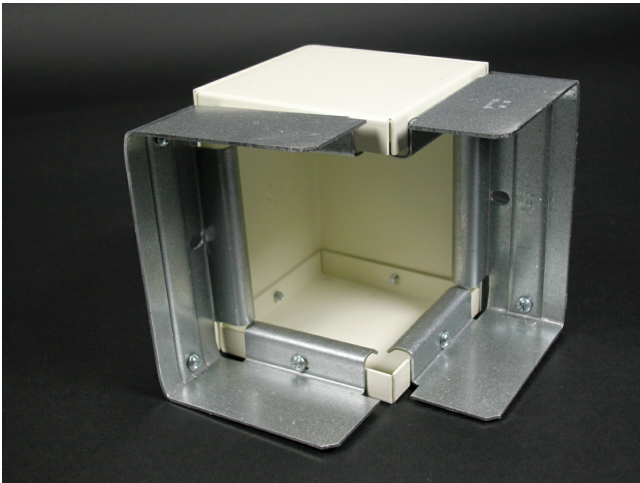




Wiremold
6000 Combination Internal or External Elbow Fitting
Part No. G6017TX



For use as internal or external elbow, straight-through fitting, tee, or cross (one G6001TX required for tee or straight through fitting, two for cross, not included).

Features & Benefits

For use as internal or external elbow, straight-through fitting, tee, or cross (one G6001TX required for tee or straight through fitting, two for cross, not included).

Specifications

General Info

Product Line	Wiremold	UPC Number	786776088014
Country Of Origin	United States	Application Sector	Commercial
Standard	cULus Listed Raceway: File E4376 Guide RJBT. Fittings: File E41751 Guide RJPR. Base & Blank Cover: Meets Article 386 of NEC. Meets Section 12-600 of CEC.	Type	Raceway

Listing Agencies / 3rd Party Agencies

cULus ListingNumber	E41751	cULus Listed	Yes
---------------------	--------	--------------	-----

Buy American Act Compliance

NAFTA	Yes
-------	-----

Additional Information

RoHS Conformant	Yes	Product Environmental Profile	Yes
-----------------	-----	-------------------------------	-----

Technical Information

Voltage	600.0 V
---------	---------
