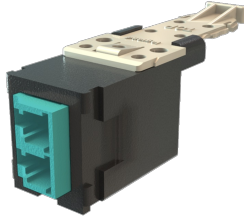




Infinium HD Fiber Module, Keyed Front Keyed Rear LC Duplex (2 Fibers), HDJ Insert, Aqua Adapter Black for Panel  
Part No. HDFM-KLC2CK-00

Legrand pre-polished keyed LC multimode and single-mode connectors provide the same ease of installation and high-quality performance as our line of standard LC pre-polished connectors. Up to twelve keys/colors of connectors are possible with unique physical keying configurations.

NOTE: The keyed connector and adapter colors must match, or the keying will prevent them from carrying the signal. LC Keyed connectors won't mate with standard LC adapters.



### Features & Benefits

Keyed LC adapters have the option to be keyed in the front only (user's side) or on both sides (user's and technician's) depending on the security requirements. Keyed workstation adapter modules are available for TracJack® and High Density Jack (HDJ) style Face plates and surface mount boxes for complete system design flexibility.

All Legrand keyed LC fiber products are engineered to be compatible with other Legrand products to provide an end to end, data center to desktop solution.

### Specifications

#### General Info

Type Adapter

#### Technical Information

Adapter Color Aqua Repeatability < 0.2dB typical change,500 matings

Adapter Front Keyed Compatibility HDJ, PHDHJU

Connector Type LC Duplex Temperature Rating 41 to +75°C

Adapter Rear Keyed