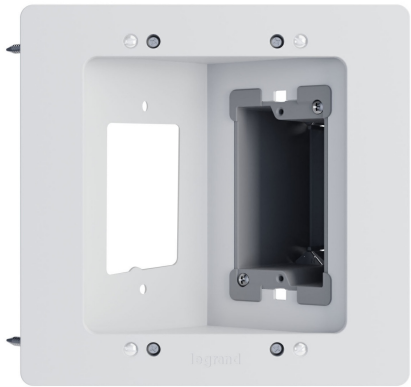




On-Q

In-Wall Power & Cable Management TV Connection Kit - New Construction/Retrofit (Blank)

Part No. HT2302BWH



Streamline your TV installation with the In-Wall Power & Cable Management TV Connection Kit. Designed for both new construction and retrofit applications, this kit supports power and Class 2 low voltage behind a wall-mounted TV. The recessed design allows cables and power connections to be neatly tucked away, enabling your TV to sit flush against the wall. The box can be mounted directly to a wall stud or secured to drywall using wing clamps. Fits in standard wood studs for new construction and retrofit applications supports wall thicknesses up to 1 inch. The Class 2 low voltage side includes concentric knockout rings for flexible conduit connections. Product contents include: Recessed TV Box, Removable Trim Ring, 1 Gang Old-Work Junction Box, and necessary mounting hardware.

Features & Benefits

- Provide recessed power and AV connectivity support for a wall mounted TV.

Recessed TV box mounts directly to wall studs with included screws for new construction installation

Hides both power and AV cables inside the wall for a clean, professional installation
- The Low voltage side of the box includes concentric knockout rings for support of flexible conduit connections.

Recessed TV box includes pre-installed wing clamps to secure to drywall in retrofit installations.

Kit Contents Include: Recessed TV Box, Removable Trim Ring, 1 Gang Old-Work Junction Box, and necessary mounting hardware.

Specifications

General Info

| | | | |
|-------------------|----------|--------------------|--------------|
| Product Line | On-Q | Color | White |
| Finish | Glossy | UPC Number | 804428435075 |
| Country Of Origin | China | Application Sector | Residential |
| Standard | Ulus | Warranty Type | 5-Year |
| Type | Wall Box | | |

Dimensions

| | | | |
|-------------------|--------|-------------------|---------|
| Product Width US | 3.8 in | Product Weight US | 0.84 lb |
| Product Height US | 8.7 in | Product Length US | 8.37 in |

Technical Information

| | | | |
|----------------------|---------|--------------------|--------------|
| Is Tamper-Resistant | No | Temperature Rating | 32° - 122° F |
| Is Weather Resistant | No | Indoor/Outdoor | Indoor |
| Voltage | 125.0 V | | |