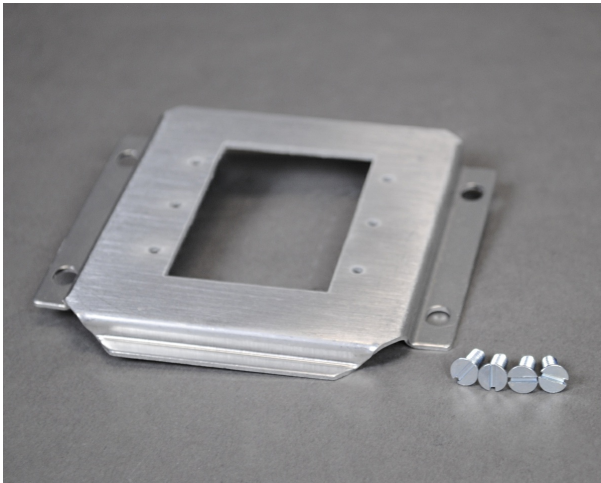




Wiremold
Multiplex Extron Device Plate
Part No. LTF48-MAAP



Wiremold Multiplex Series Service Fittings deliver adaptability throughout the life-cycle of libraries, commercial office spaces, or financial institutions where they are installed. Interchangeable faceplates for power, communication, or A/V can be exchanged as service needs change. Multiplex Series Service Fittings are suitable for both new construction or renovation. Multiplex Series Service Fittings are designed to be installed on many infloor systems including Walkerduct® Underfloor Duct®, and Walkerduct Pro Series. They can also be installed on other infloor raceway systems. These fittings were developed to handle large capacity single and dual service requirements to the workstation and can also be used to feed multiple workstations. Faceplates allow for partition feeds, plug-in point termination or custom field applications.

Features & Benefits

Faceplate with 6a mini adapter for Wiremold Open System CM2 communication modules.

Specifications

General Info

Product Line	Wiremold	UPC Number	786564074649
Country Of Origin	United States	Application Sector	Commercial
Standard	cULus Listed Underfloor Raceway Fittings: File E11912, Guide RQKX, Meets Article 390 of NEC		

Listing Agencies / 3rd Party Agencies

ETL Listed Yes

Buy American Act Compliance

NAFTA Yes

Additional Information

RoHS Conformant Yes

Technical Information

