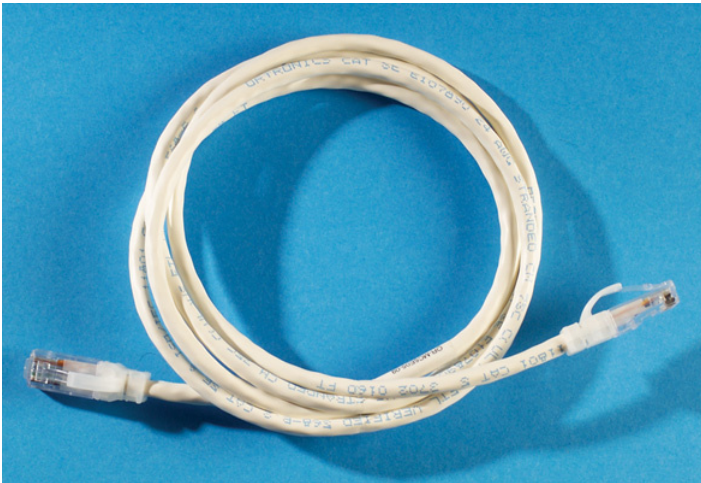




Ortronics
Clarity CAT5E Modular Patch Cord, 20 ft, White
Part No. MC5E20-09



Clarity® patch cords utilize center tuned technology to elevate channel performance. Clarity 6A, 6 and 5E cords are ETL verified to Category 6 and 5e component standards. More importantly, center tuning these cords to Clarity jacks and panels provides significant elevation of channel performance that can be field measured.

Features & Benefits

Center tuned to Clarity jacks and panels for a more transparent mated union
Narrow Paralign plug profile supports use in high density panels and hubs

Paralign™ 2 plug termination better controls plug performance

Icon compatible – provides additional TIA-606-A designation capabilities

Assembled with premium cordage, 100% factory tested for performance, reliability and long life

Specifications

General Info

Product Line	Ortronics	UPC Number	662875466475
Country Of Origin	Mexico	Application Sector	Commercial/Industrial
Standard	ETL	Type	Copper Patch Cord

Additional Information

RoHS Conformant Yes