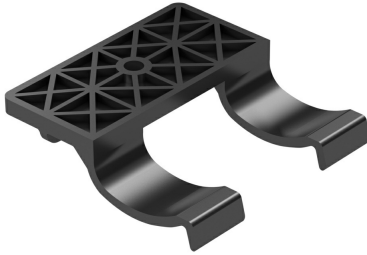




Wiremold
ModPower Cable Management Cord Clips
Part No. MDCLIPS



People move. Equipment moves. Furniture moves. Power must be easy to change and relocate. The industry's first code compliant modular power system is designed to give you the freedom to reconfigure power and charging as you need. No matter how your project unfolds, the ModPower System provides convenient power access that meets code.

Features & Benefits

Modular code-compliant power. Connect up to six of our power units together to create a system of power for training spaces, workstations or flexible spaces.

On surface units can be mounted using clamp (for a damage-free install) or can be installed using wood screws. Installation for in surface units is a snap: Simply cut the opening, insert the unit, tighten the clamps, snap on the bezel and plug it in.

FCC Compliance. This device complies with part 15 of the FCC Rules.

Tamper resistant receptacles. Models have three tamper resistant receptacles to keep little fingers away from danger.

Choose in surface or on surface. Pick the option that best fits your space: in surface or on surface. On surface units can be mounted under or above table surfaces. In surface units include a bezel that hides the mounting screws for a cleaner look.

UL Spill Water Compliant. Passed UL 962A spill water test requirements so it can be used in a horizontal surface, such as a tabletop.

You will notice that our units (primary, middle and end) all utilize a circuit breaker. UL962A Supplement SD requires that all furniture power distribution units for portable (moveable) workspace tables contain supplementary overcurrent protection.

Specifications

General Info

Product Line	Wiremold	Color	Black
UPC Number	786776195309	Country Of Origin	China
Application Sector	Commercial	Type	Modular Power System

Dimensions

Product Weight US	0.2991 lb
-------------------	-----------

Additional Information

RoHS Compliant	Yes
----------------	-----

Technical Information

Indoor/Outdoor	Indoor
----------------	--------
