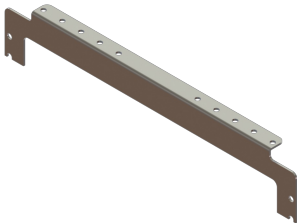




Ortronics
MM20 Cable Runway Mounting Bracket - 2 in H for the rear of MM20 4-Post racks - supports runway up to 18 in W - White
Part No. MM20CRB4PRU-W



Mounts to the top side of the Mighty Mo rack channels or frames, providing mounting for runway (ladder rack) to run parallel with the row of racks. Standard brackets position the bottom of the runway at 2" above the rack height and 6" high brackets position the bottom of the runway at 6" above the rack height.

Features & Benefits

- Mounts to Mighty Mo 20 racks: Allows you to secure cable runway parallel to the racks.
- Provides mounting locations for multiple runway sizes: No need to stock multiple mounting plates.
- No additional hardware required: Uses existing hardware from rack.

Specifications

General Info			
Product Line	Ortronics	Color	White
UPC Number	662875223832	Country Of Origin	United States
Application Sector	Commercial	Type	Rack
Dimensions			
Product Width US	4.0 in	Product Depth US	31.0 in
Product Height US	23.25 in		
Additional Information			
RoHS Conformant	Yes		