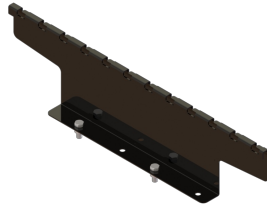




Ortronics

MM20 Cable Tray Mounting Bracket - 6 in H for the side of MM20 4-Post racks - supports wire tray up to 24 in W - Black

Part No. MM20CTB6H4PU-B



Mighty Mo 20 Cable Wire Tray Mounting Brackets

Mounts to the top side of the Mighty Mo rack channels or frames, providing mounting for wire tray to run parallel with the row of racks. Standard brackets position the bottom of the wire tray at 2 in above the rack height and 6 in high brackets position the bottom of the wire tray at 6 in above the rack height.

## Features & Benefits

Mounts to Mighty Mo 20 racks: Allows you to secure cable tray parallel to the racks.

Provides mounting locations for multiple runway sizes: No need to stock multiple mounting plates.

No additional hardware required: Uses existing hardware from rack.

## Specifications

### General Info

Product Line	Ortronics	Color	Black
UPC Number	662875223825	Country Of Origin	United States
Application Sector	Commercial	Type	Rack

### Dimensions

Product Width US	6.4 in	Product Depth US	1.25 in
Product Height US	2.8 in		

### Additional Information

RoHS Conformant	Yes
-----------------	-----