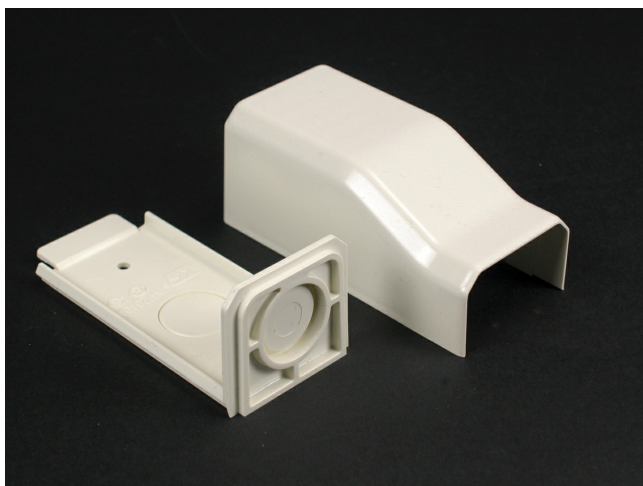




Wiremold
NM2000 Entrance End Fitting Fitting
Part No. NM2010A



To end feed raceway or Plugmold strip. Has 1/2" trade size KO on end and bottom.

Features & Benefits

To end feed raceway or Plugmold strip. Has 1/2" trade size KO on end and bottom.

Specifications

General Info

Product Line	Wiremold	UPC Number	786776519853
--------------	----------	------------	--------------

Country Of Origin	United States	Application Sector	Commercial
-------------------	---------------	--------------------	------------

Standard	cULus Listed Base & Blank Cover: File E90378 Guide RJBT. Multioutlet Assemblies: File E15191 Guide PVGT. Fittings: File E90377 GuideRJPR. Base & Blank Cover & Plugmold Series w/Snapcoil Harness: Meets Article 386 of NEC. Meets Section 12-3032 of CEC. Plugmold Wired Sections: Meets Article 380 of NEC. Meets Section 12-3032 of CEC.	Type	Plugmold
----------	--	------	----------

Dimensions

Product Width US	1.75 in	Product Weight US	0.107 lb
------------------	---------	-------------------	----------

Product Depth US	1.6 in	Product Length US	1.75 in
------------------	--------	-------------------	---------

Listing Agencies / 3rd Party Agencies

cULus ListingNumber	E90377	cULus Listed	Yes
---------------------	--------	--------------	-----

Trade Programs

USMCA	Yes
-------	-----

Additional Information

RoHS Compliant	Yes
----------------	-----

Technical Information

Amperage	15 A	Enclosure Type	Non-Metallic
Voltage	120.0 V	Environmental Conditions	Dry interior locations
