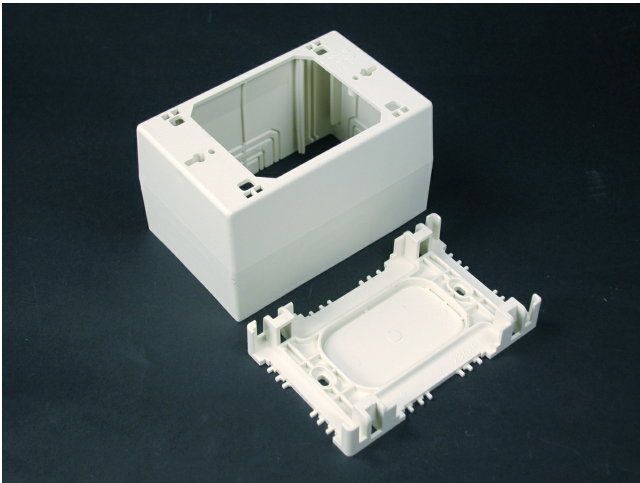




Wiremold
NM2000 Extra Deep Device Box Fitting
Part No. NM2044



Mounts power/communications devices when additional depth is required. Has combination twistouts for 2700, 2800, 2900 and NM2000 Series Raceways. 4 3/4" L x 3" W x 2 3/4" D (121mm L x 76mm W x 70mm D). 1-Gang.

Features & Benefits

Mounts power/communications devices when additional depth is required. Has combination twistouts for 2700, 2800, 2900 and NM2000 Series Raceways. 4 3/4" L x 3" W x 2 3/4" D (121mm L x 76mm W x 70mm D). 1-Gang.

Specifications

General Info

Product Line	Wiremold	UPC Number	786776541809
Country Of Origin	United States	Application Sector	Residential/Commercial
Standard	cULus Listed Base & Blank Cover: File E90378 Guide RJBT. Multioutlet Assemblies: File E15191 Guide PVGT. Fittings: File E90377 Guide RJPR. Base & Blank Cover & Plugmold Series w/Snapcoil Harness: Meets Article 386 of NEC. Meets Section 12-3032 of CEC. Plugmold Wired Sections: Meets Article 380 of NEC. Meets Section 12-3032 of CEC.		
	Type	Raceway	

Dimensions

Product Width US	3.0 in	Product Depth US	2.75 in
Product Length US	4.75 in		

Listing Agencies / 3rd Party Agencies

cULus ListingNumber	E90377	cULus Listed	Yes
---------------------	--------	--------------	-----

Buy American Act Compliance

NAFTA	Yes
-------	-----

Additional Information

RoHS Conformant	Yes
-----------------	-----

Technical Information

Voltage	600 V
---------	-------
