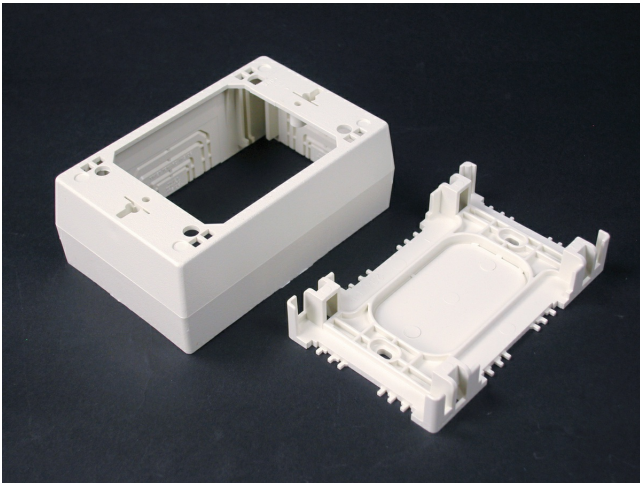




Wiremold
NM2000 Sure-Snap Deep Device Box Fitting
Part No. NM2048



Cover snaps onto base - no screws required. Cover has twistouts on all sides. Rectangular KO in base for extension to wall box. Used with 2700, 2800, 2900 and NM2000 Series Raceways. 4 3/4" L x 3" W x 1 3/4" D (121mm L x 76mm W x 44mm D). 1-Gang.

Features & Benefits

Cover snaps onto base - no screws required. Cover has twistouts on all sides. Rectangular KO in base for extension to wall box. Used with 2700, 2800, 2900 and NM2000 Series Raceways. 4 3/4" L x 3" W x 1 3/4" D (121mm L x 76mm W x 44mm D). 1-Gang.

Specifications

General Info

Product Line	Wiremold	UPC Number	786776519945
--------------	----------	------------	--------------

Country Of Origin	United States	Application Sector	Commercial, Residential
-------------------	---------------	--------------------	-------------------------

Standard	cULus Listed Base & Blank Cover: File E90378 Guide RJBT. Multioutlet Assemblies: File E15191 Guide PVGT. Fittings: File E90377 Guide RJPR. Base & Blank Cover & Plugmold Series w/Snapcoil Harness: Meets Article 386 of NEC. Meets Section 12-3032 of CEC. Plugmold Wired Sections: Meets Article 380 of NEC. Meets Section 12-3032 of CEC.	Type	Raceway
----------	--	------	---------

Dimensions

Product Width US	3.0 in	Product Weight US	0.27 lb
------------------	--------	-------------------	---------

Product Depth US	1.75 in	Product Length US	4.75 in
------------------	---------	-------------------	---------

Listing Agencies / 3rd Party Agencies

cULus ListingNumber	E90377	cULus Listed	Yes
---------------------	--------	--------------	-----

Additional Information

RoHS Compliant Yes

Technical Information

Voltage 600.0 V
