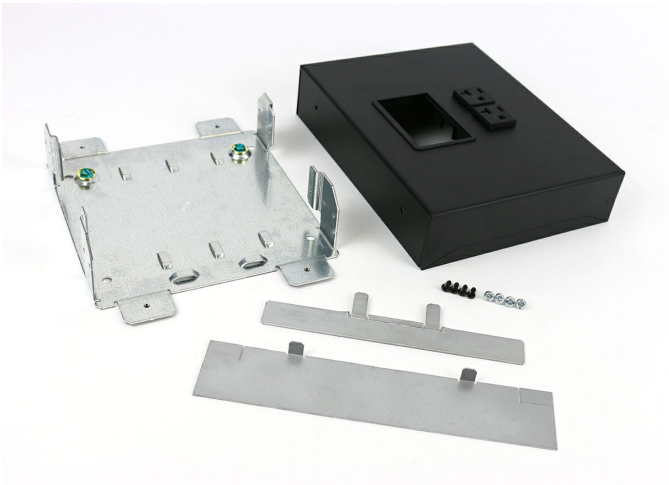




Wiremold
OFR Series Overfloor Raceway Transition Box
Part No. OFR48-2MRTC



Allows cords and cables to make a smooth, concealed transition to the underside of the table when used with the InteGreat Transition Channel.

Features & Benefits

20A Receptacle - the box includes an egress opening with a grommet and top mounted 20A receptacle that is concealed when the InteGreat Transition Channel is placed on top.

Compatible with InteGreat Transition Channel - establishes a connection with the InteGreat Transition Channel to deliver power, communications and A/V cords and cables to the work surface.

Includes Knockouts - Transition Box has knockouts on each side of the box, allowing the OFR Overfloor Raceway to feed into, or pass through the outlet box.

Specifications

General Info

Product Line	Wiremold	UPC Number	786776183115
Country Of Origin	United States	Application Sector	Commercial
Standard	OFR Series Overfloor Raceway System is cETLus Listed.	Type	Raceway

Listing Agencies / 3rd Party Agencies

ETL Listed	Yes
------------	-----

Buy American Act Compliance

NAFTA	Yes
-------	-----

Additional Information

RoHS Conformant Yes

Technical Information

Voltage 600 V
