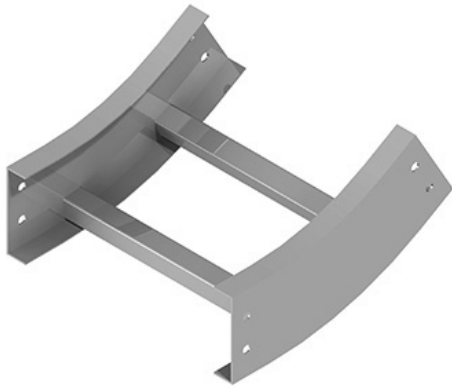




Cablofil  
Vertical Inside 30 Elbow  
Part No. P035012



Choose from an extensive selection of metallic ladder tray with a variety of rung and bottom styles to choose from. Finishes include steel, 304L and 316L stainless steel to meet the needs of any application. Rail heights range from 4" to 7" and width sizes are available up to 36".

## Features & Benefits

Splices included

## Specifications

### General Info

Product Line	Cablofil	Finish	GC
UPC Number	800388328686	Country Of Origin	Mexico

### Dimensions

Product Width US	6.0 in	Product Weight US	6.411 lb
Product Volume US	0.49 cu ft	Product Depth US	8.125 in
Product Height US	17.375 in		

### Buy American Act Compliance

BAA	Yes
-----	-----