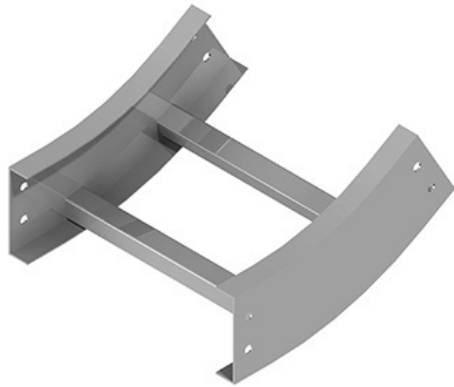




Cablofil  
Vertical Inside 30 Elbow  
Part No. P035852



Choose from an extensive selection of metallic ladder tray with a variety of rung and bottom styles to choose from. Finishes include steel, 304L and 316L stainless steel to meet the needs of any application. Rail heights range from 4" to 7" and width sizes are available up to 36".

## Features & Benefits

Splices included

## Specifications

### General Info

Product Line	Cablofil	Finish	Hot Dipped Galvanized after Fabrication
UPC Number	800388329669	Country Of Origin	Mexico
Bottom Type	Ladder	Application Sector	Commercial, Industrial
Type	Vertical Elbows		

### Dimensions

Product Width US	6.0 in	Product Weight US	8.241 lb
Product Volume US	0.646 cu ft	Product Depth US	10.125 in
Product Height US	18.375 in	Radius	12 in

### Trade Programs

BAA	Yes
-----	-----