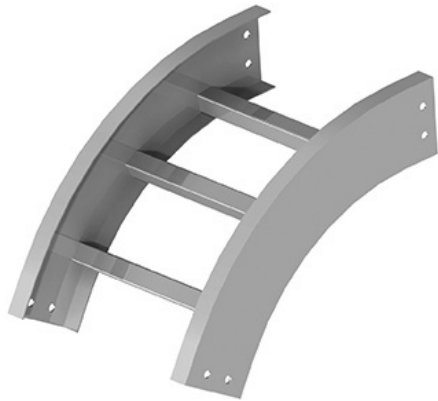




**Cablofil**  
**Vertical Outside 60 Elbow**  
Part No. P088472



Choose from an extensive selection of metallic ladder tray with a variety of rung and bottom styles to choose from. Finishes include steel, 304L and 316L stainless steel to meet the needs of any application. Rail heights range from 4" to 7" and width sizes are available up to 36".

## Features & Benefits

Splices included

## Specifications

### General Info

|              |                 |                    |   |
|--------------|-----------------|--------------------|---|
| Product Line | Cablofil        | Finish             | Hot Dipped Galvanized after Fabrication |
| UPC Number   | 800388368149    | Country Of Origin  | Mexico                                  |
| Bottom Type  | Ladder          | Application Sector | Commercial, Industrial                  |
| Type         | Vertical Elbows |                    |   |

### Dimensions

|                   |             |                   |          |
|-------------------|-------------|-------------------|----------|
| Product Width US  | 30.0 in     | Product Weight US | 9.661 lb |
| Product Volume US | 3.442 cu ft | Product Depth US  | 11.75 in |
| Product Height US | 16.875 in   | Radius            | 12 in    |

### Trade Programs

|     |     |
|-----|-----|
| BAA | Yes |
|-----|-----|