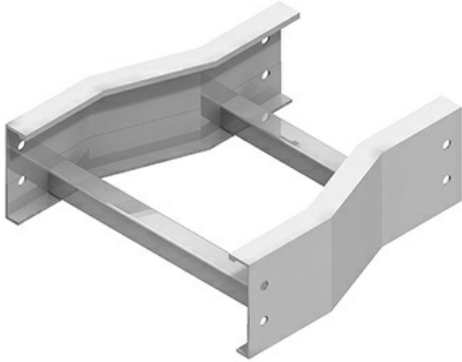




Cablofil
SC-5G2I-0124-12 STR Red 24"W to 12"W
Part No. P173808



The aluminum I-beam design of ITray is perfect for industrial installations with large diameter cables in long span situations, minimizing total tray width and creating a smooth transition between straight sections and fittings. A structural offset in the sidewall creates strong, mid-span splices that need fewer supports. Each splice snaps in place and stays without holding. Additionally, only four bolts are needed for each splice reducing hardware needs by 50%. These features allow Itray to be installed up to 30% faster than standard tray.

Features & Benefits

| | |
|---|---------------------------------|
| Material: Aluminum Alloy 6063 | Finish: Plain |
| Bottom: LD: 1" wide rungSB: Flat sheet over RungSC: Solid CorrugatedVC: Vented Corrugated | Construction: Welded |
| Connectors: All fittings are supplied with necessary connectors and fasteners | Fitting heights (H): 4, 5, 6, 7 |

Specifications

General Info

| | | | |
|--------------|--------------|-------------------|--------|
| Product Line | Cablofil | Finish | GC |
| UPC Number | 800388285576 | Country Of Origin | Mexico |

Dimensions

| | | | |
|-------------------|------------|-------------------|-----------|
| Product Width US | 24.0 in | Product Weight US | 12.716 lb |
| Product Volume US | 1.25 cu ft | Product Depth US | 18.0 in |
| Product Height US | 5.0 in | | |

Buy American Act Compliance

| | |
|-----|-----|
| BAA | Yes |
|-----|-----|