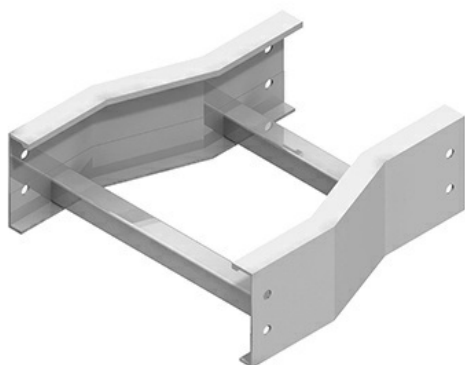




Cablofil
Discontinued - SC-7A-SR24-12 AL 7H STR REDUCER 24/12W
Part No. P313210



The aluminum I-beam design of ITray is perfect for industrial installations with large diameter cables in long span situations, minimizing total tray width and creating a smooth transition between straight sections and fittings. A structural offset in the sidewall creates strong, mid-span splices that need fewer supports. Each splice snaps in place and stays without holding. Additionally, only four bolts are needed for each splice reducing hardware needs by 50%. These features allow Itray to be installed up to 30% faster than standard tray.

Features & Benefits

Material: Aluminum Alloy 6063

Finish: Plain

Bottom: LD: 1" wide rung

Construction: Welded

Connectors: All fittings are supplied with

Fitting heights (H): 4, 5, 6, 7

Specifications

General Info

Product Line	Cablofil	Finish	AL
UPC Number	800388190863	Country Of Origin	Mexico

Dimensions

Product Width US	25.5 in	Product Weight US	7.717 lb
Product Volume US	1.923 cu ft	Product Depth US	18.0 in
Product Height US	7.241 in		

Trade Programs

BAA	Yes
-----	-----